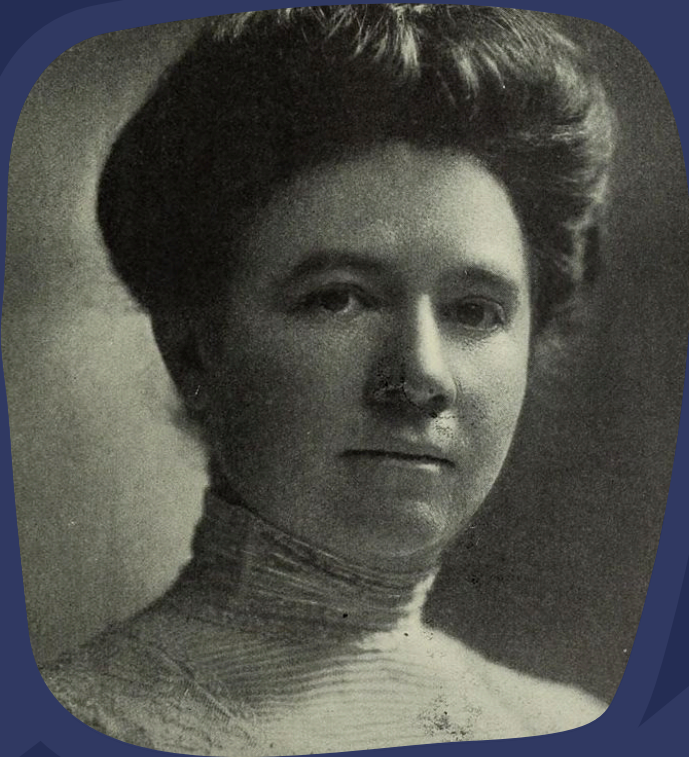




COMMUNITY ENGAGEMENT BLUEPRINT

*MOBILIZING GOOD NEIGHBOR
CULTURE*

A stylized rainbow graphic in the bottom right corner, consisting of several parallel curved lines in yellow, green, blue, and red.



"MISS BERRY, REALIZING THE GREAT LACK OF HER OWN
NEIGHBORHOOD, BEGAN TO LEND HER BEST ENERGIES
TO THE SOLUTION OF THE PROBLEM OF HOW TO
BROADEN THE LIVES OF THE PEOPLE LIVING NEAR HER,"

-1920 BERRY CATALOG

NOT TO BE

SERVED,

BUT **TO** **SERVE.**

BERRY COLLEGE MOTTO

A large orange circle is centered on a light blue background. Inside the circle, text is written in a dark brown, bold, sans-serif font, slanted upwards from left to right. The text reads: "COMMUNITY ENGAGEMENT ADVANCES BERRY'S MOTTO OF 'NOT TO BE SERVED, BUT TO SERVE' BY MOBILIZING OUR GOOD NEIGHBOR CULTURE BEYOND OF THE GATE OF OPPORTUNITY."

COMMUNITY ENGAGEMENT
ADVANCES BERRY'S MOTTO
OF "NOT TO BE SERVED, BUT
TO SERVE" BY MOBILIZING
OUR GOOD NEIGHBOR
CULTURE BEYOND OF THE
GATE OF OPPORTUNITY.

SERVICE

*MOBILIZING STUDENTS
TO SERVE BECAUSE
SERVING OTHERS
FOSTERS EMPATHY AND
COMPASSION*

EDUCATION

*EQUIPPING STUDENTS WITH
THE TOOLS TO BETTER
UNDERSTAND AND BRING
RESTORATIVE CHANGE*

CORE PRINCIPLES OF COMMUNITY ENGAGEMENT

COMMITMENT

*CONNECTING STUDENTS WHO
ARE PASSIONATE ABOUT CIVIC
AND COMMUNITY
ENGAGEMENT WITH A
FOUR-YEAR DEVELOPMENTAL
PATHWAY OF SERVICE*

UNITY

*BUILDING BRIDGES TO OUR
LOCAL COMMUNITY,
FOSTERING MEANINGFUL
RELATIONSHIPS*

LEARNING OUTCOMES

*CIVIC
AGENCY*

*INTERGRATIVE
LEARNING*

LEADERSHIP

SOCIAL JUSTICE

COMMUNICATION

*PLACE-BASED
KNOWLEDGE*

DIVERSITY

EMPATHY

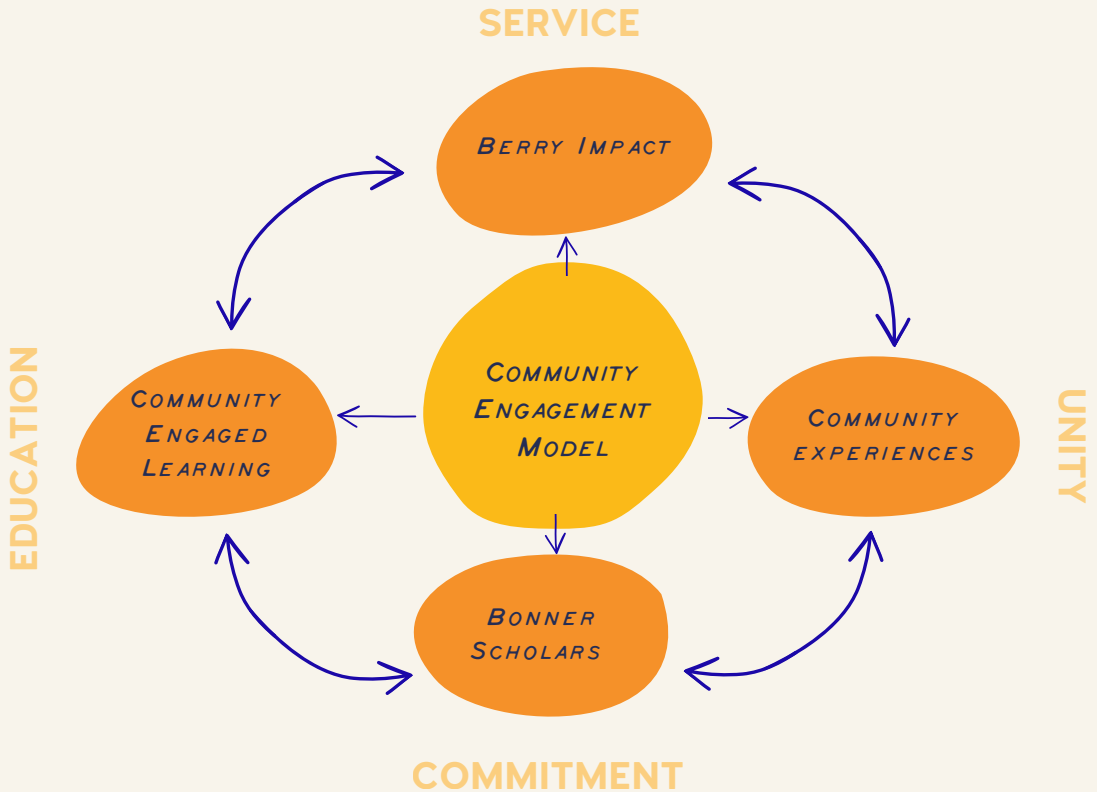
*CRITICAL
THINKING*

WELLNESS

CIVIC IDENTITY

*TEAM
WORK*

COMMUNITY ENGAGEMENT MODEL





BERRY*impact*

The Berry Impacts program mobilizes Good Neighbor Culture by equipping and encouraging Berry College students and employees to join our community through intentional and meaningful service. The program includes four initiatives that present several opportunities for students, staff, and faculty to get involved.

VOLUNTEER CONNECT

VOLUNTEER CONNECT DOES JUST THAT. IT CONNECTS STUDENTS WITH SINGLE OR SHORT-TERM SERVICE OPPORTUNITIES IN THE LOCAL COMMUNITY AND BEYOND.

SUSTAINED COLLABORATIVE PROJECTS

SCPs ARE LONG-TERM COMMUNITY PROJECTS THAT BERRY AND COMMUNITY PARTNERS COLLABORATE ON

YEAR OF SERVICE

IN PARTNERSHIP WITH RESIDENCE LIFE, THE YEAR OF SERVICE CONNECTS BERRY STUDENTS WITH THE ROME COMMUNITY. PARTICIPANTS LIVE AND SERVE TOGETHER WITH A COMMUNITY PARTNER FOR ONE ACADEMIC YEAR.

EMPLOYEE INITIATIVE

OUR EMPLOYEE INITIATIVE ALLOWS BERRY COLLEGE EMPLOYEES TO MODEL OUR COMMITMENT TO GOOD NEIGHBOR CULTURE BY SERVING IN THE COMMUNITY.

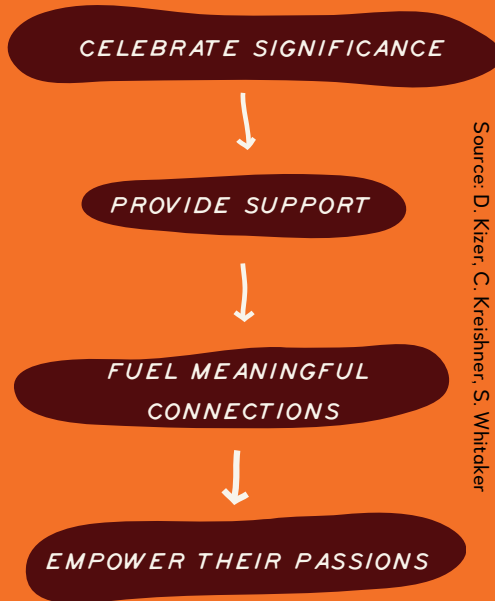


VOLUNTEER CONNECT

Berry's student-led team that helps facilitate Berry's community impact and connect students, staff, and faculty (individuals and groups) with an array of community service opportunities.

BERRY *impact*

FRAMEWORK

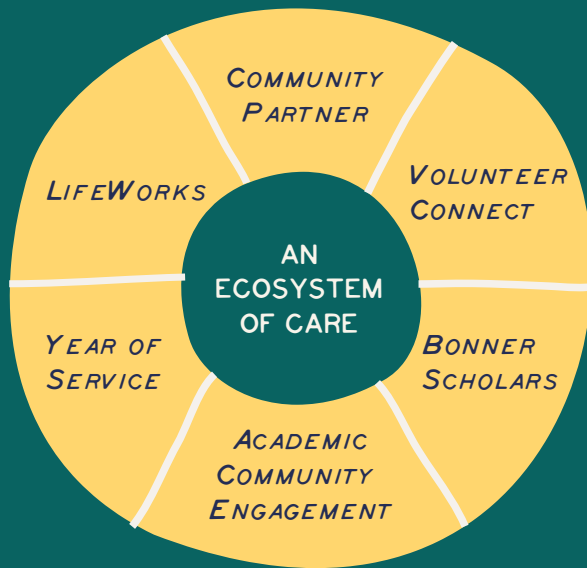


Source: D. Kizer, C. Kreishner, S. Whitaker



SUSTAINED COLLABORATIVE PROJECTS

SCPs are long-term, strategic, and collaborative community projects that integrate multiple facets of campus to improve a focused area in the community. SCPs can involve various parts of campus; they do not require all to be involved. These projects aim to create lasting impact by leveraging the unique strengths of each participating group.



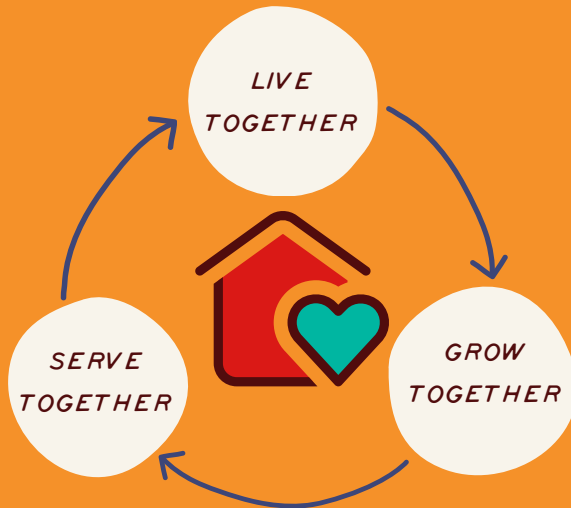


YEAR OF SERVICE

Year of Service is a living-learning community established to promote a direct link between Berry students and the local Rome community. These themed houses contribute to the welfare of others in the Berry and the local Rome community and should be a true complement to the culture and mission of Berry.

These living-learning communities are supported and fostered by Residence Life, the Office of Belonging and Community Engagement, and members of the campus community.

BERRYImpact





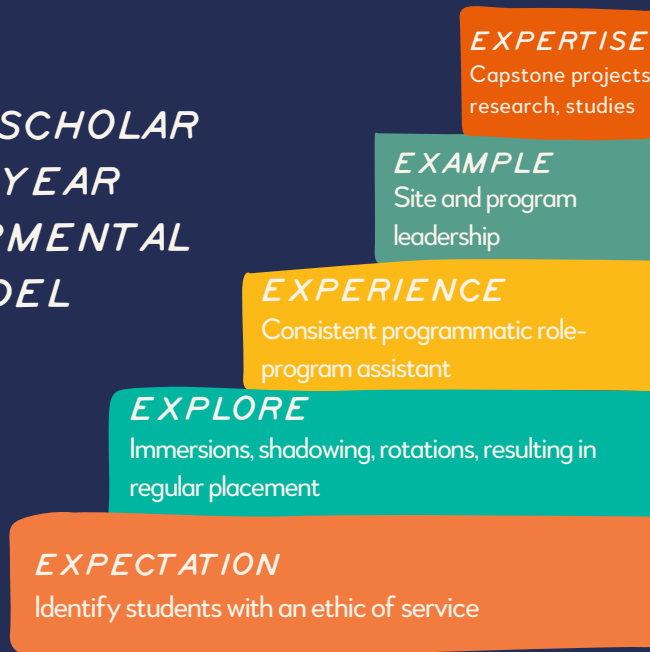
The Social Impact



BONNER SCHOLARS PROGRAM

The Bonner Scholars Program provides deserving students who are passionate about civic engagement with financial aid in exchange for a weekly commitment to intensive and meaningful service with local community organizations over four years as undergraduate students. Bonner Scholars often lead various service projects and partner with Berry Impact in community impact and opportunities for non-Bonner Scholars to serve in Bonner-related projects.

BONNER SCHOLAR FOUR YEAR DEVELOPMENTAL MODEL





ACADEMIC COMMUNITY ENGAGEMENT (ACE)

*MOBILIZING GOOD NEIGHBOR
CULTURE FROM THE CLASSROOM*

ACADEMIC AFFAIRS OFFERS OVER 30 ACE COURSES THAT CHALLENGE STUDENTS TO ENGAGE IN CRITICAL REFLECTION AS THEY PURSUE OPPORTUNITIES TO APPLY ACADEMIC KNOWLEDGE IN DIVERSE COMMUNITY SETTINGS.

ACADEMIC AFFAIRS WORKS CLOSELY WITH THE OFFICE OF DIVERSITY AND BELONGING TO SUPPORT THE INTEGRATION OF ACADEMIC COURSEWORK, COMMUNITY ENGAGEMENT, AND SIGNATURE LEARNING OPPORTUNITIES.

ACE OPPORTUNITIES & SAMPLE COURSES

- ENG 475: WRITING AND COMMUNITY
- SOC 375: SOCIOLOGY OF DISABILITY
- SPA 300: SPANISH IN CONTEXT

- CLASSROOM SERVICE—LEARNING PROJECTS
- COMMUNITY—BASED RESEARCH
- INTERNSHIPS

For more information about ACE Courses, please email:
AcademicServices@berry.edu



COMMUNITY EXPERIENCES

BERRY COLLEGE COLLABORATES WITH VARIOUS COMMUNITY PARTNERS TO HOST INCREDIBLE EVENTS AND EXPERIENCES FOR THE WHOLE COMMUNITY. THESE EXPERIENCES AIM TO BUILD HOPE, UNDERSTANDING, AND UNITY FOR THE ROME AND FLOYD COUNTY AREA.

QUICK LOOK

50+

*LOCAL AND NATIONAL
COMMUNITY PARTNERS*

99%

*99% OF BERRY COLLEGE
STUDENTS WILL PARTICIPATE
IN SERVICE DURING THEIR
BERRY JOURNEY*

70+

BONNER SCHOLARS

*THE INTENSIVE, FOUR-
YEAR, COHORT-BASED
DESIGN OF THE BONNER
PROGRAM HAS ENABLED
OUR CAMPUS TO DEEPEN
PARTNERSHIPS IN OUR
LOCAL COMMUNITY, WHICH
IN TURN HAS
STRENGTHENED AND
EXPANDED OPPORTUNITIES
FOR CAMPUS-WIDE
ENGAGEMENT.*

30+

ACE COURSES

25,000+

*HOURS DEDICATED TO
SERVING OUR LOCAL
COMMUNITY EACH YEAR*

OUR TEAM



HALEY SMITH

Chief Belonging
and Community
Engagement
Officer

HSmith@Berry.edu



LAURIE CHANDLER

Director of Operations
and Development

LChandler@Berry.edu



CALLI O'NEAL

Assistant Director
of Education and
Intergration

CONeal@Berry.edu



**JULIE
MCCLUSKEY**

Assistant Director of
Programming and
Partnerships

JMcCluskey@Berry.edu



**SHAKARAH
CUMMINGS**

Coordinator of Student
Engagement &
Community Relations

SCummings@Berry.edu



**SHERYL
CAYCHO**

Coordinator of the
Bonner Scholars
Program

SCaychoMantilla@Berry.edu

The Office of Belonging and Community Engagement serves the campus in envisioning and implementing how Good Neighbor Culture is sustainably accomplished at Berry and beyond the Gate of Opportunity.

Office: Suite 331 in the Krannert Center

Email: Belonging@Berry.edu

Phone: 706-368-6985

More Information: Berry.edu/Belonging



Office of Belonging and
Community Engagement