



# VISUAL & PERFORMING Arts

Calendar of Events  
2024 | 2025



*The artist vocation  
is to send light into  
the human heart.*

George Sand

---

## *A letter from* **ADAM HAYES**

*Dear Friends,*

We are delighted to offer you a dynamic and robust season of events in 2024–2025! This season, our events capture a variety of artistic and cultural displays by our art, dance, music and theatre programs. Many of our offerings feature nationally recognized artists in a wide variety of genres and styles.

A number of events will feature Berry students who share their talents and demonstrate their capacity for learning and appreciation of the arts. There are also opportunities to see and hear our fantastic faculty artists.

It is our hope that you will take advantage of the many fine cultural offerings and engage, share and participate in the arts at Berry College! Thank you for your continued support, and we look forward to seeing you at our next event.



Dr. Adam Hayes, Director  
Department of Visual and Performing Arts



*A Gentleman's Guide to Love and Murder*  
Berry College Theatre Company, April 2024



# FALL

## August

Su	Mo	Tu	We	Th	Fr	Sa
				1	2	3
4	5	6	7	8	9	10
11	12	13	14	15	16	17
18	19	20	21	22	23	24
25	26	27	28	29	30	31



Music



Theatre



Dance



Art



### Imperiled Beauty



**Laura C. Martin**

August 26–September 18  
 Mon.–Fri., 9 a.m.–5 p.m.  
 Moon Gallery

*Imperiled Beauty*, an information and art exhibit, showcases the 19 Georgia native plants that are on the federal endangered species list. Each watercolor painting is accompanied by a panel providing information about habitat, bloom time and description, reasons for vulnerability and conservation actions, as well as a map showing where it grows in Georgia. Laura Martin earned a Bachelor of Science degree in botany from the University of Georgia and a certificate in Botanical Art and Illustration from the New York Botanical Gardens. Martin is author of 26 books, including *A Naturalist's Book of Wildflowers* (2020).



#### Artist's talk

September 18  
 5:30–6:30 p.m.  
 McAllister Auditorium

# September

Su	Mo	Tu	We	Th	Fr	Sa
1	2	3	4	5	6	7
8	9	10	11	12	13	14
15	16	17	18	19	20	21
22	23	24	25	26	27	28
29	30					



## Kris Carlisle, piano



**Faculty Artist Series**  
September 12, 7 p.m.  
Bell Recital Hall

This program is a presentation of pieces written in the last 10 years by up-and-coming composers. All the pieces presented are by

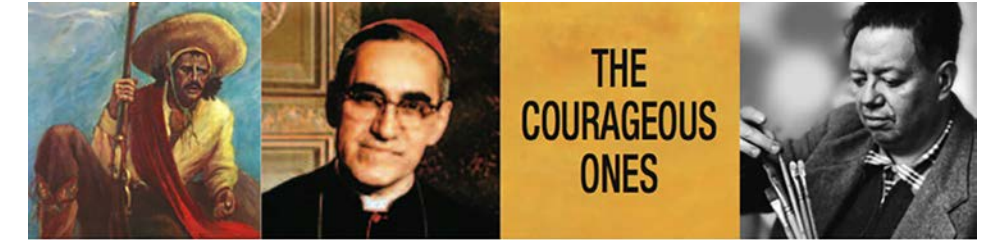
composers who identify as members of the LGBTQ+ community, following in the footsteps of earlier greats such as Aaron Copland, Ned Rorem, Samuel Barber and many others. This music encompasses a wide range of genres and styles and includes several world and U.S. premieres. Special thanks to all the composers who have provided pieces for this program.

## Core Ensemble



**Berry College Concert Series**  
September 19, 7 p.m.  
Bell Recital Hall

*Los Valientes* is a chamber music theatre production for solo actor and instrumental trio (cello, piano, percussion) exploring the artistic and political passions of Diego Rivera, the unwavering commitment to human rights of Salvadoran Archbishop Óscar Romero and the pursuit of social justice by Mexican American desperado Joaquín Murrieta (a.k.a. Zorro). Text is by José Cruz Gonzáles. Music for this show features songs and concert/vernacular by a wide range of Latin American composers, including Astor Piazzolla and Osvaldo Golijov.



# Los Valientes

## Jack Thorpe, saxophone



**Guest Artist Series**  
September 10, 7 p.m.  
Bell Recital Hall

Atlanta-based saxophonist Jack Thorpe serves as an artist affiliate of saxophone at Georgia State University. As a concerto soloist, he has performed with the University of Illinois Symphony Orchestra, the Stephen F. Austin State University Symphonic Orchestra and the Georgia State University Symphonic Wind Ensemble. As the alto player in the Versa Quartet, Thorpe won first place in the 2020 North American Saxophone Alliance's Quartet. In 2017, he co-founded the Snow Pond Saxophone Quartet, a chamber ensemble formed to represent the Frederick L. Hemke Saxophone Institute at the Snow Pond Center for the Arts to international audiences. The quartet performed throughout Japan in 2017 alongside soloist Masato Kumoi and toured the southeastern United States in 2019. Thorpe's debut album *Illusory Dreams* was released on October 6, 2023.



## After Words



**Kimberly Lyle**  
September 23–October 17, Mon.–Fri., 9 a.m.–5 p.m.  
Moon Gallery

*After Words* continues Kimberly Lyle's explorations into the ways technology functions and how it informs our interactions with each other. This installation combines tangible and digital processes that synthesize a participant's breath into sounds from different languages.

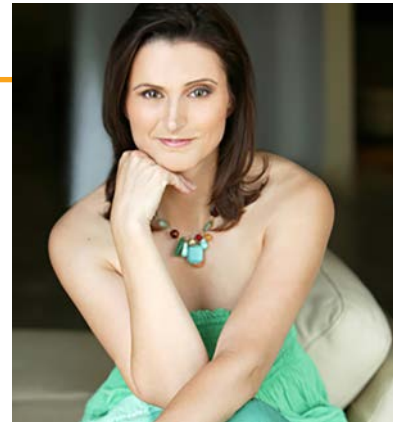
Kimberly Lyle has exhibited her work throughout the United States and abroad (Korea, Panama, Switzerland, Mexico, Ecuador and England). She earned a Master of Fine Arts degree in Intermedia from Arizona State University and Bachelor of Arts degrees in psychology and studio art from Stetson University in Florida. She is an assistant professor of sculpture and technology at the University of Georgia.



## Artist's talk

September 23  
6:30–7:30 p.m.  
McAllister Auditorium





## Trio Melange

**Horn Trio**  
**Guest Artist Series**  
 September 26, 7 p.m.  
 Bell Recital Hall

Dr. James Boldin, horn; Dr. Richard Seiler, piano; Dr. Claire Vangelisti, soprano, are a trio composed of faculty members at the University of Louisiana Monroe and



is dedicated to promoting and performing music for soprano, horn and piano. Past performances include the 2017 and 2018 New Music on the Bayou Summer Festivals, the 48th International Horn Symposium, the International Women's Brass Conference and guest recitals at Centenary College of Louisiana, Stephen F. Austin State University and the University of Texas at Tyler. The concert will include a variety of works, including music by Gaetano Donizetti, Emma Kent Wine, Franz Lachner and Arnold Cooke.



## Berry College Wind Ensemble Fall Concert

October 1, 7 p.m.  
 Bell Recital Hall



Join the Berry College Wind Ensemble for their first performance of the season. This concert will feature standards of literature, a concert march and innovative music.

# October

Su	Mo	Tu	We	Th	Fr	Sa
		1	2	3	4	5
6	7	8	9	10	11	12
13	14	15	16	17	18	19
20	21	22	23	24	25	26
27	28	29	30	31		



Music



Theatre



Dance



Art



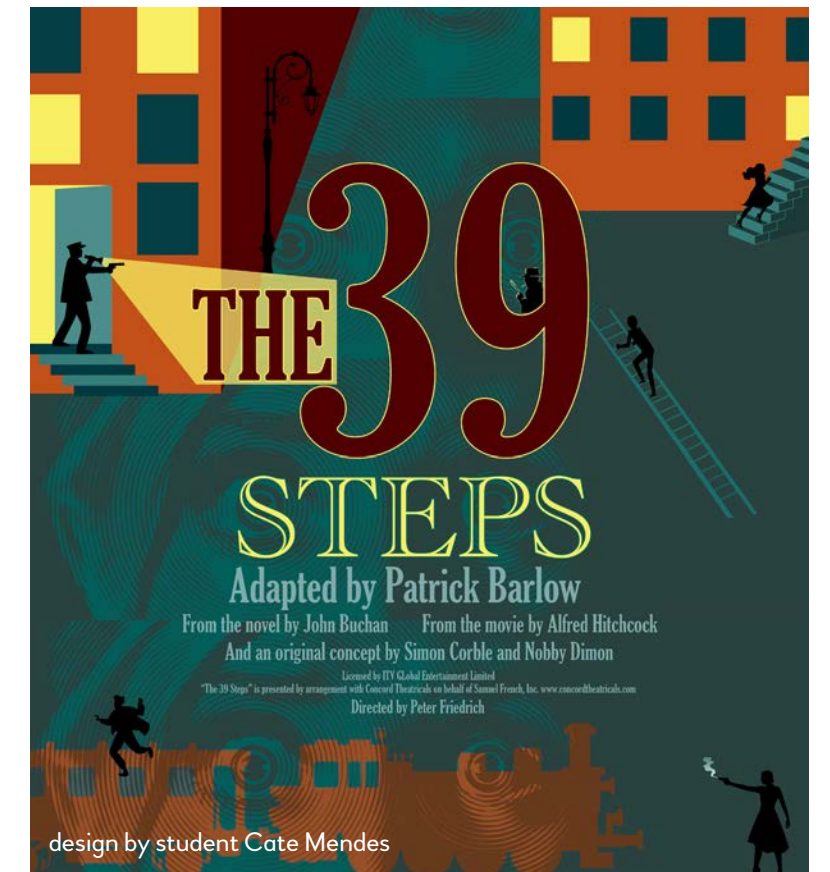
## Berry College Theatre Company presents *The 39 Steps*

**A play by Patrick Barlow**  
**Directed by Peter Friedrich**

October 3-5, 7 p.m.  
 October 6, 2 p.m.  
 Sisters Theatre  
 Tickets: \$7 at [BERRY.EDU/ONSTAGE](http://BERRY.EDU/ONSTAGE)  
 or call 706.236.2263



Mix a Hitchcock masterpiece with a juicy spy novel, add a dash of Monty Python and you have *The 39 Steps*. This fast-paced whodunit is about a man who meets a woman with an accent claiming she's a spy. When he takes her home, she is murdered. Soon a mysterious organization called The 39 Steps is on a nationwide manhunt that climaxes in a death-defying finale. This two-time Tony and Drama Desk award-winning play is packed with nonstop laughs, over 150 zany characters (played by a cast of four), an on-stage plane crash, handcuffs, missing fingers and good old-fashioned romance.



## Berry Winds with the Atlanta Saxophone Quartet



October 8, 7 p.m.  
Bell Recital Hall

Join Berry Winds for their first concert of the season. Berry Winds is an auditioned group that typically features only one or two students per part. They perform music of the highest caliber. This opening concert includes a collaboration with the renowned Atlanta Saxophone Quartet, including artist affiliate faculty member Gary Paulo.

The Atlanta Saxophone Quartet promotes saxophone artistry and education through performance and programming, including Atlanta Saxophone Day. Founded in 2006, the quartet has enjoyed performing in a variety of settings, from feature concerts, conferences and educational outreach programs at schools and universities to



private events and weddings. They are proud to continue to bring the saxophone to a variety of audiences and look forward to continuing the tradition of the saxophone quartet through performance and education.



The Berry Singers will present a concert in the Bell Recital Hall entitled "Celestial Harmonies: A Musical Journey Through Sun and Moon." Featured composers include Lauridsen, Rheinberger, Ligeti, and Craig Hella Johnson. Berry's a cappella ensemble, the Berry Voices, will open the program.

image by Sam Ratcliffe

## Liminal Form



**Yuichiro Komatsu**  
October 21–November 14  
Mon.–Fri., 9 a.m.–5 p.m.  
Moon Gallery

*Liminal Form* is recent ceramic-based work by Columbus State University professor Yuichiro Komatsu. The exhibition consists of groupings of objects meant to evoke an elegant simplicity that balances, in the words of the artist, "fragility and permanence."

Born in Tokyo, Japan, Komatsu earned his Bachelor of Fine Arts degree from the State University of New York at New Paltz and Master of Fine Arts degree from the New York State College of Ceramics at Alfred University. His work has been exhibited regionally (including Atlanta), nationally (including Kansas City, Mo.) and internationally in Brazil, Canada, China and Germany.



### Artist's talk

October 21  
5–6 p.m.  
McAllister Auditorium





## Berry College Choirs

October 24, 7 p.m.  
Bell Recital Hall



The Berry College Choirs fall concert will feature an evening of choral music presented in the beautiful Bell Recital Hall. The concert will feature the Treble Choir and the Tenor-Bass Choir and will include a varied selection of music celebrating their unique voices.



## Song Cycle Concert

October 29, 7 p.m.  
Bell Recital Hall



*Toward the Call of the Owl* is a song cycle by Chris Ferebee with settings of poetry by Jesse Graves. For soprano, string quintet, piano and plucked strings, the piece explores the contemporary South through the paradox of a living past. Ghosts and memories stand alongside birds, mountains and the heat of the sun in exploring the idea of a "homeplace." Prior to each musical setting, the poems will be read by the poet himself.



## Berry College Symphony Orchestra

November 5, 7 p.m.  
Bell Recital Hall



Join Berry's Symphony Orchestra for an evening with excerpts from Edvard Grieg's enchanting incidental music to Henrik Ibsen's play *Peer Gynt*. Also featured on the program will be Perry Holbrook's moving work *Someday*.



# November

Su	Mo	Tu	We	Th	Fr	Sa
					1	2
3	4	5	6	7	8	9
10	11	12	13	14	15	16
17	18	19	20	21	22	23
24	25	26	27	28	29	30

## Angela Owens, voice



**Berry College Concert Series II**  
November 7, 7 p.m.  
Bell Recital Hall

Welcome international opera singer Angela L. Owens to the Berry Concert Series. She will bring her exquisite program of art song, opera and more. Internationally recognized for her "beauty and musicality (The London Times)," as well as her "attractively full-bodied, passionate soprano voice (Opera News)," Owens has appeared in opera, theater, concert, television and film across the globe and throughout the United States. She serves on the board of the Harris Arts Center in Calhoun, Ga., and is on faculty at the University of Wisconsin (Parkside), Manhattan School of Music and Interlochen Center for the Arts. She is an alumna of Florida State University and the University of Kentucky.





## Berry College Wind Ensemble with Indra Thomas

November 17, 3 p.m.  
Bell Recital Hall



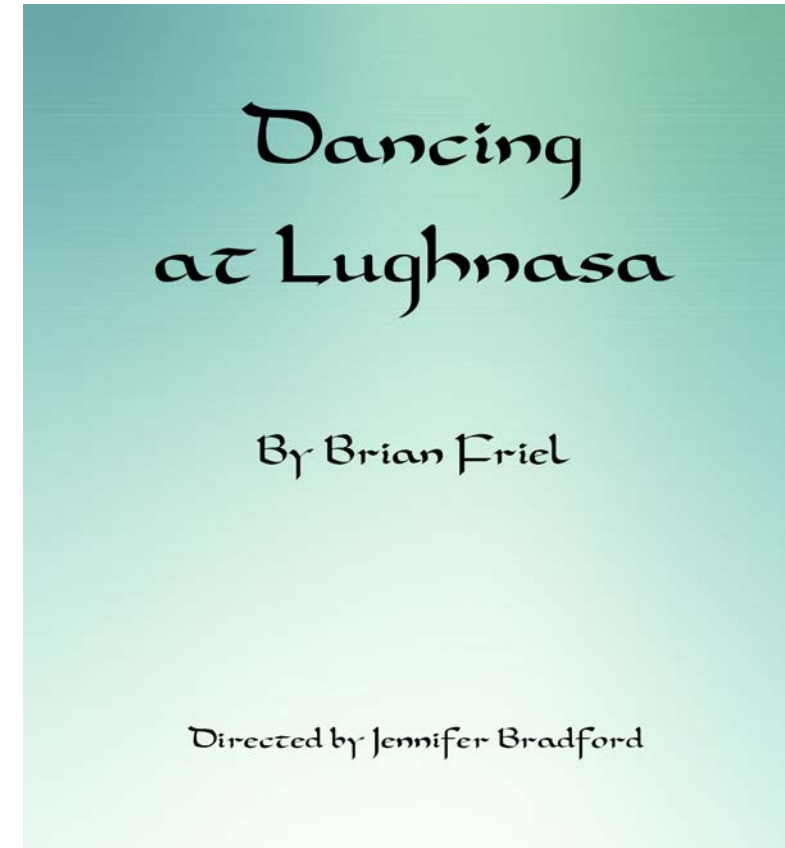
The Berry College Wind Ensemble will have its first collaboration with Artist-in-Residence of Voice Indra Thomas, renowned opera singer. Known for her lush and warm sound, Indra has performed at many world-class opera houses and venues, such as the Metropolitan Opera and the Vienna State Opera.

## Berry Winds



November 19, 7 p.m.  
Bell Recital Hall

Come join the Berry Winds concert ensemble for a musical evening. Comprised of outstanding musicians, Berry Winds will perform a concert of innovative repertoire and new works.



## Berry College Theatre Company presents *Dancing at Lughnasa*

A play by Brian Friel  
Directed by Jennifer Bradford

November 20–23, 7 p.m.

November 24, 2 p.m.

Sisters Theatre

Tickets: \$7 at [BERRY.EDU/ONSTAGE](http://BERRY.EDU/ONSTAGE)

or call 706.236.2263



*Dancing at Lughnasa* is a memory play told by Michael Evans as he recounts the summer when he was a young child living with his aunts in a cottage in Ireland in 1936. Kate, Maggie, Agnes, Rosie and Christina are unmarried sisters struggling to make ends meet when their brother Jack, a priest who has lived as a missionary in Uganda, returns and seems to have abandoned his Catholic ways. A radio that only works intermittently leads the women into sudden outbursts of dancing. The moral tension is exacerbated when financial ruin hits the family.



## Berry College Jazz Ensemble

November 21, 7 p.m.  
Bell Recital Hall

The Berry College Jazz Ensemble is renowned for its tight and energizing performances, outstanding soloists and talented student arrangers. Directed by Artist-in-Residence John David, the ensemble performs music ranging from exciting new contemporary jazz works to swinging classics.



## Berry College Choirs Holiday Concert

November 24, 3 p.m.  
Bell Recital Hall



The Berry Choirs will present an evening filled with holiday favorites. This festive concert will feature performances by the Treble Choir, the Tenor-Bass Choir and student a cappella groups. If you love beautiful holiday choral favorites, classic holiday tunes, as well as contemporary a cappella styles, this is a show you won't want to miss.



## Berry College Lessons and Carols

December 6, 7 p.m.  
College Chapel



Inspired by the cherished Lessons and Carols Services from England, the Berry Singers will perform in the Berry College Chapel. This festive event will blend traditional scripture readings with a selection of classic choral anthems, contemporary compositions and beloved carols. Join us for an evening that celebrates the season with timeless music and heartfelt readings.



## Select (student group exhibition)



December 2-6, Mon.-Fri., 9 a.m.-5 p.m.

Moon Gallery

**Reception:** December 2, 11 a.m.

*Select* features artwork made in current Berry studio art classes, including two-dimensional design, drawing, ceramics, digital imaging, animation and painting. Inclusion in the show is based on input from students in each class. At the reception, members of the Berry art faculty will facilitate a discussion about the work on display with guests.

# December

Su	Mo	Tu	We	Th	Fr	Sa
1	2	3	4	5	6	7
8	9	10	11	12	13	14
15	16	17	18	19	20	21
22	23	24	25	26	27	28
29	30	31				

-  Music
-  Theatre
-  Dance
-  Art



photo by Jake Patton

## Holiday Wonders

December 6, 7 p.m.  
December 7, 2 and 7 p.m.  
Sisters Theatre



Celebrate the holidays with Berry College Dance Company in this diverse dance concert presenting ballet, modern, tap and jazz dance! Fun for the whole family, this show will include faculty, alumni and student choreography performed by our Berry College dance students. The link to purchase tickets will be posted at [BERRY.EDU/ACADEMICS/MAJORS/DANCE](http://BERRY.EDU/ACADEMICS/MAJORS/DANCE).



## Senior Pre-thesis Exhibition (student group exhibition)

December 9–13, Mon.–Fri., 9 a.m.–5 p.m.  
Moon Gallery

The Senior Pre-thesis Exhibition features culminating projects from the pre-thesis advanced studio problems class. Various subjects, concepts, techniques and materials are explored through a range of practices including photography, graphic design, painting, ceramics and drawing by the following students: Sarah Agullo, Lilly Benefield, Connor Johnson, Caroline Lord, Madeline Mrozek, Allie Patterson, Lilli Sams, Ashley Grace Smith, and Cam Waddle.

# SPRING

# January

Su	Mo	Tu	We	Th	Fr	Sa
			1	2	3	4
5	6	7	8	9	10	11
12	13	14	15	16	17	18
19	20	21	22	23	24	25
26	27	28	29	30	31	

-  Music
-  Theatre
-  Dance
-  Art

## Berry College Opera presents Stephen Sondheim's classic

Directed by Scott Willis  
Conducted by Paul Neal  
January 23–25, 7 p.m.  
Bell Recital Hall



*Sweeney Todd: The Demon Barber of Fleet Street* follows Benjamin Barker — a barber unjustly imprisoned by the lecherous Judge Turpin — who returns to London as Sweeney Todd, bent on revenge. Reopening his barbershop above Mrs. Lovett's failing pie shop, Todd begins a murderous rampage, slitting the throats of his customers. Mrs. Lovett, ever resourceful, bakes the bodies into her suddenly popular meat pies. As Todd's thirst for vengeance grows, the plot spirals into a dark tale of obsession, murder and the quest for justice, leading to a blood-soaked, tragic climax.

## The Vanishing Point of Our Frontier



**Douglas Barrett**

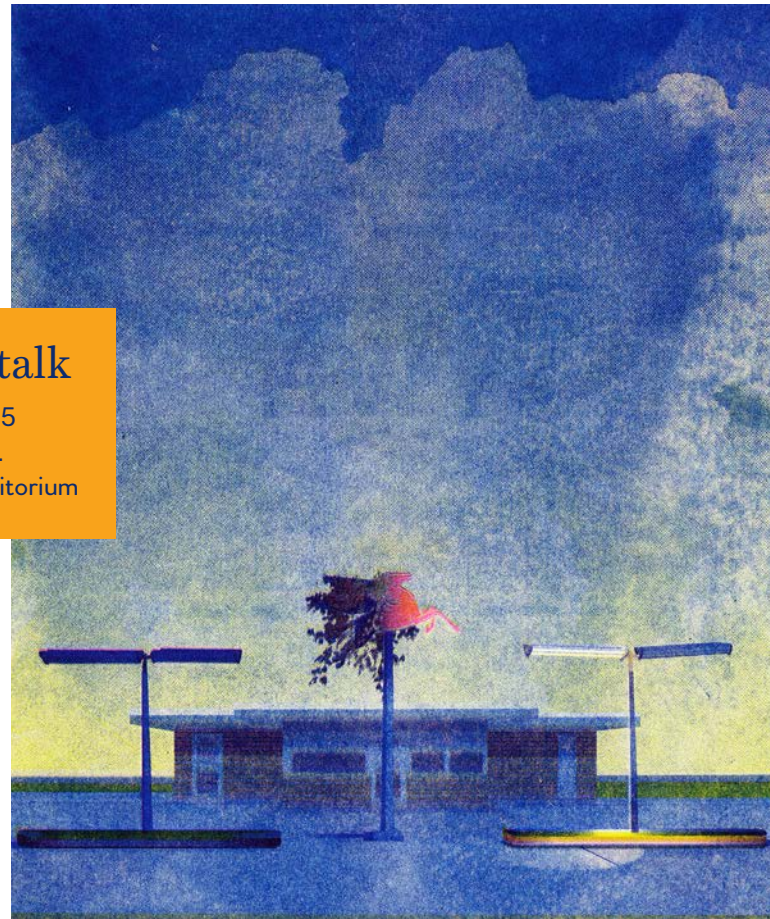
January 13–February 5, Mon.–Fri., 9 a.m.–5 p.m.  
Moon Gallery

In this body of work, Douglas Barrett explores roadside imagery, captured in a glimpse, as if through the window of a train. This concept is borrowed from Michel de Certeau's *The Practice of Everyday Life*, where the landscape is seen at the moment of creation, right before it vanishes.

Barrett earned his Bachelor of Fine Arts degree in graphic design from the University of Central Florida in Orlando and Master of Fine Arts degree in graphic design from the University of Florida, Gainesville. Since 2008, he has taught graphic design at the University of Alabama at Birmingham where he founded BLOOM studios.

### Artist's talk

February 5  
5–6 p.m.  
McAllister Auditorium



## John David's Jazz All-Stars

**Berry College Concert Series III**

February 6, 7 p.m.  
Bell Recital Hall



Renowned drummer and Berry College Artist-in-Residence John David brings his latest aggregation of world-class musicians to present a concert of original jazz music from their latest release on Blue Canoe Records. This album showcases the finest contemporary jazz performance featuring an incredible lineup, including David on drums, pianist/composer Randy Hoexter, saxophonist Sam Skelton, guitarist Mike Stern, and bassist Jimmy Haslip.

## stuff (group exhibition)



February 10–March 6  
Mon.–Fri., 9 a.m.–5 p.m.  
Moon Gallery

*stuff* is a curated group exhibition that highlights the material aspects of art and how those materials help convey meaning in the work. The show features artists working in a range of mediums — works on paper, printmaking, textiles, sculpture and photographs — from across the United States.



Music



Theatre



Dance



Art



# February

Su	Mo	Tu	We	Th	Fr	Sa
						1
2	3	4	5	6	7	8
9	10	11	12	13	14	15
16	17	18	19	20	21	22
23	24	25	26	27	28	



## Berry Vocal Gala (*The Great American Songbook*)

February 13, 7 p.m.  
Bell Recital Hall



This annual event will take a different turn this year. The Berry Vocal Gala will feature songs from *The Great American Songbook*, a canon of the most iconic

and influential American popular songs, movie and musical theatre repertoire, plus jazz standards from the early to mid-20th century. These songs have stood the test of time and are among the greatest works ever written by American composers.

## Berry Winds

February 23, 3 p.m.  
Bell Recital Hall



Join Berry Winds for a concert of modern repertoire. This performance will include music written by underrepresented composers in celebration of Black History Month.



## Berry College Wind Ensemble

February 27, 7 p.m.  
Bell Recital Hall

Join the Berry College Wind Ensemble for an evening of song. This concert will feature works written by American composers.



## *Pride Pots: A Safe Container*

**Heather Mae Erickson**  
March 17–April 12  
Mon.–Fri., 9 a.m.–5 p.m.  
Moon Gallery



Heather Mae Erickson is an award-winning artist who is deeply invested in studying and crafting functional ceramics. *Pride Pots: A Safe Container* builds on these explorations by engaging with different communities to paint the vessels created by Erickson, which are then displayed in the gallery. These collaborative events support LGBTQ+ visibility and promote conversations with one another.

Erickson earned her Bachelor of Fine Arts degree from the University of the Arts in Philadelphia and Master of Fine Arts degree from the Cranbrook Academy of Art in Michigan. Currently, she is an associate professor at Western Carolina University in Cullowhee, N.C.



### Artist's talk

March 17  
5–6 p.m.  
Intercultural Center



# March

Music



Su Mo Tu We Th Fr Sa

Theatre



						1
2	3	4	5	6	7	8

Dance



9	10	11	12	13	14	15
---	----	----	----	----	----	----

Art



16	17	18	19	20	21	22
23	24	25	26	27	28	29

30	31					
----	----	--	--	--	--	--

## Berry Brass Day featuring Dallas Brass

**Berry Concert Series IV**  
March 23  
Bell Recital Hall



Berry College brass students and faculty, joined by area high school brass musicians, will spend the day celebrating brass chamber music. Our featured artists are the Dallas Brass, who will provide masterclasses and a late-afternoon concert.

The Dallas Brass is a seven-member chamber brass ensemble that has dazzled audiences since 1983. Its repertoire features a wide variety of music, including classical and contemporary custom arrangements. The Dallas Brass has collaborated with the Cincinnati Pops and New York Pops at Carnegie Hall and around Europe. The group has released six recordings: *Debut*, *Dallas Brass*



*II*, *A Merry Christmas with Brass*, *Windborne*, *Nutcracker* and *American Musical Journey*.

The concert will be a ticketed event; seating is limited. Call the music office at 706.236.2289 after March 1 for more information.



# April

Music



Su Mo Tu We Th Fr Sa

Theatre



		1	2	3	4	5
		6	7	8	9	10
		11	12	13	14	15
		16	17	18	19	20
		21	22	23	24	25
		26	27	28	29	30

Dance



Art




**Berry College Symphony Orchestra**

April 3, 7 p.m.  
Bell Recital Hall

For the Berry College Symphony Orchestra spring concert, come celebrate music from Appalachia and Argentina.

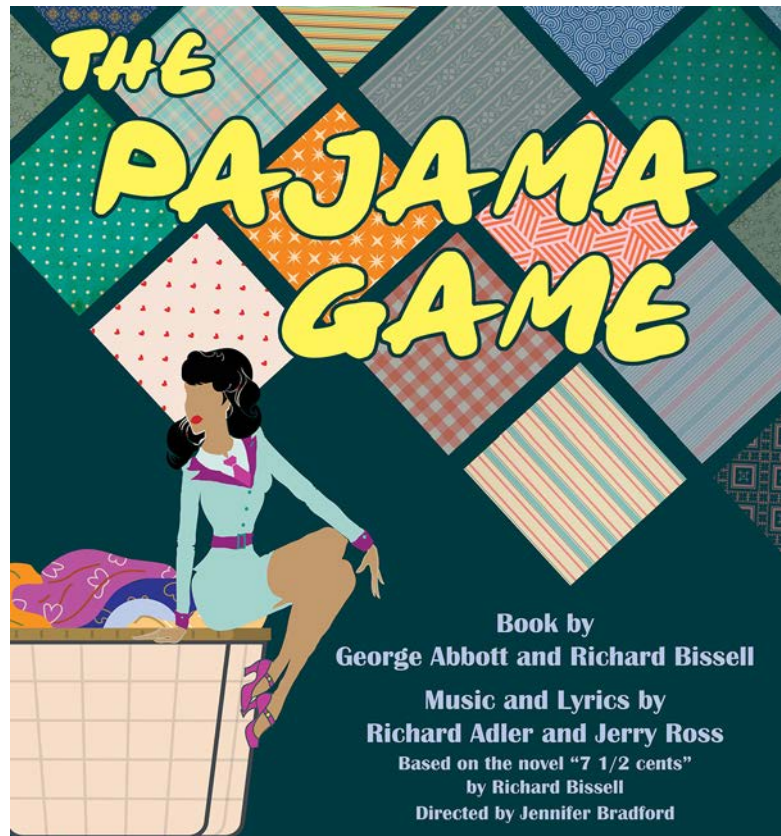
## Honors Recital



April 8, 5 p.m.  
Bell Recital Hall

The Berry College chapter of Pi Kappa Lambda, a national honor society in music, will host its annual recital celebrating the accomplishments of our music majors. Students are nominated for this honor and selected by the faculty members of Pi Kappa Lambda. Performance excellence is only one component of the society's mission, and Berry is proud to present this student recital.





design by student Cate Mendes

## The Pajama Game



A play by George Abbott, Richard Bissell (based on his novel *7½ Cents*); music and lyrics by Richard Adler and Jerry Ross

Directed by Jennifer Bradford

April 9–12, 7 p.m.

April 13, 2 p.m.

Sisters Theatre

Tickets: \$7 at [BERRY.EDU/ONSTAGE](http://BERRY.EDU/ONSTAGE)

or call 706.236.2263

Conditions at the Sleep-Tite Pajama Factory are anything but peaceful as sparks fly between new superintendent Sid Sorokin, and Babe Williams, leader of the union grievance committee. Their stormy relationship comes to a head when the workers strike for a 7½-cent pay increase, setting off a conflict between management and labor, as well as a battle of the sexes. Awarded the 1955 Tony for “Best Musical” and nearly 50 years later “Best Revival of a Musical,” the play proves it is timeless entertainment. With its energetic score, *The Pajama Game* is brimming with song and dance.



image by Sam Ratcliffe

## Berry College Choirs



April 12, 7 p.m.  
Bell Recital Hall

Join us for the Berry College Choirs spring concert, an evening of choral music held in the Bell Recital Hall. This performance will showcase the talents of both the Treble Choir and the Tenor-Bass Choir, offering a diverse repertoire that highlights the distinct beauty of their voices.

## Berry College Jazz Ensemble



April 10, 7 p.m.  
Bell Recital Hall

The Berry College Jazz Ensemble is renowned for its tight and energizing performances, outstanding soloists and talented student arrangers. Directed by Artist-in-Residence John David, the ensemble performs music ranging from exciting new contemporary jazz works to swinging classics.



## Berry Singers present *Requiem* by Maurice Duruflé



April 13, 3 p.m.  
First Baptist Church of Rome

The Berry Singers will join college organist Steven Wooddell in a presentation of one of the great choral masterworks of the 20th century. The Duruflé *Requiem* combines Gregorian chant and modern harmonies, creating a deeply spiritual and moving experience. Join us for an afternoon of music that celebrates the timeless connection between life, death and the divine.





## Berry Winds

April 15, 7 p.m.  
Bell Recital Hall



Come join Berry Winds for their final concert performance of the season. This concert is the culmination of a successful musical season. The ensemble will perform a variety of works of the highest caliber.

## Annual Student Honors Show (student group exhibition)

April 16–24, Mon.–Fri., 9 a.m.–5 p.m.  
Moon Gallery

**Juror's talk/reception:** Wednesday, April 16, 5–6 p.m., Moon Gallery



The Annual Student Honors Show features work made in Berry College studio art classes during the 2024–25 academic year. To have their work included, students submit digital images to the juror who then makes the selections. Our juror, artist/educator Heather Mae Erickson, is the recipient of numerous awards, has participated in many artist residencies and leads various workshops. She exhibits her work widely, including recent solo exhibitions at Western Carolina University, The Clay Studio in Philadelphia and the Hive Gallery in Sylva, N.C. At the reception, Professor Erickson will discuss her choices and announce pieces receiving special recognition.



## Berry College Wind Ensemble



April 22, 7 p.m.  
Bell Recital Hall

Join the Berry College Wind Ensemble for their final program of the season. This performance will include a variety of works, from band classics to new literature.

## Senior Thesis Exhibitions (student group exhibition)



**Sarah Agullo, Lilly Benefield, Connor Johnson, Caroline Lord, Madeline Mrozek, Allie Patterson, Lilli Sams, Ashley Grace Smith, Cam Waddle and Lillian Whittle**  
April 28–May 2; May 5–9, Mon.–Fri., 9 a.m.–5 p.m.  
Moon Gallery

The senior thesis exhibition serves as the capstone experience for art majors completing the studio art concentration. These exhibitions represent the culmination of a student's involvement in the art program, providing them with the opportunity to develop and implement their own research agenda. The resulting body of work is then prepared and installed for public display accompanied by a written context for the work.



photo by Nadhia Garcia

## Spring into Dance

April 25, 7 p.m.  
April 26 and 27, 2 p.m.  
Sisters Theatre



Celebrate spring with Berry College Dance Company! This performance features a variety of stories and expressions told by faculty and student choreographers in a wide variety of dance genres. The link to purchase tickets will be posted at [BERRY.EDU/ACADEMICS/MAJORS/DANCE](https://berry.edu/academics/majors/dance).

## Visual & Performing Arts at Berry

The Berry College Department of Visual & Performing Arts incorporates the disciplines of the visual arts, dance, music and theater, and our mission is to provide a quality education and practical experiences for our students while enriching the artistic and cultural presence on our campus, the community and the world. Degrees of study include theatre, music performance, music education, music business, studio art, art history and art education.



## About Berry College

**Nationally recognized for academic excellence and as an outstanding educational value**, Berry is an independent, comprehensive liberal arts college of approximately 2,200 students. The college offers an exceptional education that balances closely mentored intellectual exploration, practical learning and character development. Its 27,000-acre campus, the world's largest, provides unmatched resources for its students' professional development.



## Visual & Performing Arts Faculty

**Adam Hayes, D.M.A., Director**

### Art

J. Bradley Adams, M.F.A.  
Tom Biondolillo, M.F.A.  
Dennis Ritter, M.F.A.  
Virginia Troy, Ph.D.

### Theatre

Jennifer Bradford, M.F.A.  
Alice Bristow, M.F.A.  
Peter Friedrich, M.F.A.  
Mandy Thomas, M.F.A.

### Music

Ruth Baker, M.M., M.M.E

Kris Carlisle, D.M.A.

Stefanie Cash, Ph.D.

John David, M.M.

Michael DeSousa, D.M.A.

Tina Erickson, M.M.

Chris Ferebee, D.M.A.

Alyssa Grey, Ph.D

Eric Hanson, D.M.A.

Kellie Henry, M.M.

Ellie Jenkins, D.M.A.

Paul Neal, D.M.A.

Kathryn Nobles, B.M.

Gary Paulo, M.M.

Lisa Reams, M.F.A.

Indra Thomas, A.D.

Sean Thrower, M.M.

Thomas Trinh, M.M.

Emily Wetzel, D.M.A.

Scott Willis, D.M.A.

Stephen Wooddell, M.M.

### Dance

Sara Pecina, M.F.A.

### Visual & Performing Arts Staff

April Allen, departmental secretary  
Gina Hicks, M.A., staff accompanist  
Shelley Reid, B.A. staff accompanist  
Kyla Zollitisch, M.M., staff accompanist





**BERRY.EDU**

Department of Visual & Performing Arts

Berry College

P.O. Box 490309 · 706.236.2289