

Berry College

Fact Book

2023-2024

Prepared by the

Office of Institutional Research

November 12, 2024

Table of Contents

<i>Section</i>	<i>Page</i>
I. General Information	1
Accreditation	2
Mission and Purpose	3
<i>Graduate</i> Programs, Vision and Purpose	4
Important Dates in Berry’s History	5
Administrative Officers	7
Organizational Chart of Berry College	10
Degrees and Majors	11
Minors	12
II. Student Information.....	13
Comparative Enrollment Statistics	14
Historical Enrollment	15
<i>Undergraduate</i> Program Enrollment History by Schools and Undeclared Majors	16
<i>Graduate</i> Program Enrollment History	17
Geographic Distribution of Total Enrollment	18
<i>Total Undergraduate</i> Enrollment by Ethnic Classification	19
<i>Total Graduate</i> Enrollment by Ethnic Classification	20
<i>Undergraduate</i> Enrollment Analysis of Other Countries Represented.....	21
<i>Graduate</i> Enrollment Analysis of Other Countries Represented.....	22
SAT/ACT Scores of Entering First-Year Students	23
High School GPA of Entering First-Year Students.....	24
First-Year Students–Berry College Retention and Graduation Rates	26
Transfer Students–Berry College Retention and Graduation Rates	27
Age Distribution of <i>Undergraduate</i> Students	28
Age Distribution of <i>Graduate</i> Students.....	29
III. Academic Profile	30
Number of <i>Undergraduate</i> Majors by Schools	31
Summary of <i>Undergraduate</i> Majors and Minors by Schools	31
Number of <i>Undergraduate</i> Majors in Rank Order.....	32
Number of <i>Graduate</i> Majors.....	35
Number of <i>Undergraduate</i> and <i>Graduate</i> Majors Summary	35
Dean’s List Summary (Undergraduates).....	36

III. Academic Profile (Continued)

Degrees Granted, 2010-2011 Through 2023-2024.....	37
Total Degrees Awarded, 2022-2023 Through 2023-2024	38
<i>Undergraduate</i> Degrees Awarded by Degree and Major	39
<i>Graduate</i> Degrees Awarded by Degree and Major.....	42
<i>Undergraduate</i> Students Graduating With Honors.....	43
Alumni Receiving Master’s Degree or Higher.....	44

IV. Faculty Profiles.....45

Institutions Most Frequently Represented by Berry Faculty’s Doctorate.....	46
Faculty	48
Full-Time Faculty, Rank and Degree	49
Full-Time Faculty, Gender Distribution Among Ranks.....	50
Berry College Faculty, Number and Percent Tenured in Top Three Ranks	51
Full-Time-Equivalent Faculty and Faculty-Student Ratio	52
Age Distribution of Full-Time Faculty	53

V. Financial54

Alumni Annual Giving.....	55
Berry College Financial-Aid Programs.....	56

Section I

General Information

Accreditation

Berry College is accredited by the Southern Association of Colleges and Schools Commission on Colleges (SACSCOC) to award baccalaureate, masters, and education-specialist degrees. Berry College also may offer credentials such as certificates and diplomas at approved degree levels. Questions about the accreditation of Berry College may be directed in writing to the Southern Association of Colleges and Schools Commission on Colleges at 1866 Southern Lane, Decatur, GA 30033-4097, by calling (404) 679-4500, or by using information available on SACSCOC's website (www.sacscoc.org).

Berry's music program is accredited by the National Association of Schools of Music (NASM), Berry's Nursing program is accredited by the Commission on Collegiate Nursing Education (CCNE), and Berry's programs in business are accredited by the Association to Advance Collegiate Schools of Business (AACSB). Berry's programs in Teacher Education are accredited by the Georgia professional Standards Commission.

Berry College is authorized to operate educational programs beyond secondary education in the state of Georgia. That authorization designates the Georgia Non-Public Postsecondary Education Commission as the state agency responsible for receiving complaints made by students enrolled at Berry College. Students may contact the Georgia Non-Public Postsecondary Education Commission to file a complaint using the following contact information: Georgia Non-Public Postsecondary Education Commission, 2082 East Exchange Place, Suite 220, Tucker, GA 30084-5305, Office: (770) 414-3300.

Mission and Purpose

Berry College is a comprehensive liberal-arts college with Christian values. The college furthers our students' intellectual, moral and spiritual growth; proffers lessons that are gained from worthwhile work done well; and challenges them to devote their learning to community and civic betterment. Berry emphasizes an educational program committed to high academic standards, values based on Christian principles, practical work experience and community service in a distinctive environment of natural beauty. It is Berry's goal to make an excellent private liberal-arts education accessible to talented students from a wide range of social and economic backgrounds.

Our first responsibility is to provide an education in the liberal arts and professional fields to meet the intellectual, moral, and material needs of our students; and we dedicate ourselves and our academic program toward fulfilling this responsibility. Research, publication, and other scholarly activities are valued and are expected to contribute to good teaching by the faculty. In keeping with this expectation, our faculty and staff dedicate themselves primarily to teaching effectively and to inspiring students to academic excellence.

An essential part of a sound education is the opportunity to explore religious faith and to relate faith with learning responsibly and intelligently, and we dedicate ourselves to providing these opportunities. The college is dedicated to the interdenominational Christian values on which it was founded and welcomes individuals of diverse backgrounds into the campus community.

Worthwhile work complements knowledge and faith in building character. We dedicate ourselves to providing this opportunity. An important part of higher education is the opportunity to participate in the internal affairs and governance of the college. We dedicate ourselves to providing this opportunity for faculty and students.

These dedications guide Berry's faculty, staff, trustees and students toward a realistic and balanced educational program. Our concern for the individual permeates our principles. The ultimate aim of Berry is service to humanity through persons who find here both inspiration and preparation as best expressed in Berry's motto, "Not to be ministered unto, but to minister."

Graduate Programs
Vision and Purpose

Berry's *vision* is to be a recognized leader in graduate education and support services in its geographic area.

The *purpose* of graduate education at Berry is threefold:

- To prepare Berry graduates for leadership roles with the academic foundation, necessary skills, and personal characteristics needed to be positive contributors to business, education, and the community.
- To deliver high-quality educational support services that meet the needs and challenges faced by Berry's partners in business, in education, and in the community.
- To provide a distinctive learning environment in which innovative thinking, ethical decision making, and individual development and team building can flourish for all constituents of the college.

Important Dates in Berry's History

- 1866** October 7, Martha Berry's Birthday.
- 1902** January 13, Boys' Industrial School founded.
- 1903** April 6, Boys' Industrial School incorporated by order of the Judge of the Superior Court of Floyd County.
- 1908** Corporate charter amended with legal name changed to "The Berry School."
The Berry Alumni Association was formed with W. Clayton Henson, the school's first graduate, as its first president.
- 1909** Thanksgiving Day. The Martha Berry School for Girls opened with 14 girls in attendance.
- 1910** Former U.S. President Theodore Roosevelt visited Berry.
- 1914** Miss Berry gave a picnic for students on the mountain campus each year. The Mountain Day celebration which is now held on the first Saturday in October in honor of Miss Berry's birthday, is a time when students and alumni join in celebrating this traditional day.
- 1915** First permanent buildings, Berry College Chapel and Blackstone Dining Hall, were constructed.
- 1916** School for older boys started at foot of Lavender Mountain.
- 1917** Corporate charter amended with legal name changed to "The Berry Schools."
- 1923** The Berry Schools accredited by the Southern Association of Colleges and Secondary Schools.
- 1926** Berry Junior College established.
- 1928** Berry Junior College accredited by Southern Association of Colleges and Secondary Schools.
- 1930** Berry College (senior college) established.
- 1931** The Ford Complex, a gift from Henry and Clara Ford, was completed.
- 1932** First senior-college class received degrees.
- 1942** February 27, Miss Martha Berry died.
- 1957** Berry College accredited by Southern Association of Colleges and Schools.
- 1972** Berry College offers Master of Education (M.Ed.) degree.
- 1973** Berry College offers Master of Business Administration (M.B.A.) degree.
- 1976** Berry College women's basketball team won Berry's first national championship.
- 1982** Corporate charter amended with legal name changed to "Berry College, Inc."
- 1983** Berry Academy closed.
- 1984** WinShape Center established through agreement with Truett Cathy, founder and chairman of Chick-fil-A.
- 1985** Alumni Work Week established.
Beginning of national recognitions by publications such as U.S. News and World Report.

Important Dates at Berry (Continued)

- 1987** Berry College women's soccer team won its first national championship in only its second year of existence.
- 1991** Berry College reorganized: sixteen departments formed into four schools. Business, Education and Human Sciences, Humanities and Social Sciences, Mathematical and Natural Sciences.
- 1993** Joanna Grant, class of 1994, became Berry's first Rhodes Scholar.
- 1995** Campbell Trust gave Berry College \$55 million.
- 1996** Berry was the site of the summer Olympic Youth Camp, a noncompetitive venue of the Centennial Olympic Games in Atlanta.
- 1998** Berry College men's golf team won the national championship.
- 2001** Berry opened a \$25 million, 130,000-square-foot science center. The Ford Motor Company Fund donated \$9.4 million for the renovation of the Ford Complex.
- 2002** Berry celebrated its Centennial anniversary, launching the \$100 million Century Campaign. The Century Campaign's record-breaking goal was achieved early with contributions totaling \$106.1 million.
- 2008** In January 2008, the Stephen J. Cage Athletic and Recreation Center opens, which ties into an overall effort to link academic, residential and campus-life facilities and create a center of the Berry community.
Berry College joined the Annapolis Group, an organization of leading national independent liberal arts colleges.
Berry College the National Collegiate Athletic Association (NCAA) as a Division III School.
The Gate of Opportunity Scholarship, a program that allows students to graduate debt free by working their way through school, was introduced in 2008.
- 2014** Berry College offers Bachelor of Science Nursing (B.S.N.) degree.
- 2015** Berry College's new Welcome Center opened in spring 2015.
In September 2015, Valhalla Stadium, which includes Williams Field, Dickey Field and Clark Track opens, supporting intercollegiate football, lacrosse, track and field and intramurals.
- 2016** In the spring of 2016, the institution conducted its first full competitive season in outdoor track and field.
- 2018** Oak Hill, Christopher Browning Pavilion (indoor/outdoor venue) opened on May 19, 2018.
- 2020** The Betty Anne Rouse Bell Recital Hall at historic Ford Auditorium restoration and renovation completed.
- 2021** Berry College's new \$15.7 million state-of-the-art animal science building, funded entirely by donor support, opened its doors in October 2021. The 23,000-square-foot facility will enhance teaching and research in animal health and production, including genetics, microbiology and physiology.

Administrative Officers and Staff
2023-2024

President's Office

Stephen R. Briggs, President
Casee Gilbert, Chief of Staff
Jonathan Huggins, Chaplain
Gabriel Marquez, Coordinator of Student Ministries
Marc Hunsaker, Dean, Personal and Professional Development
Mike Burnes, Director, LifeWorks Operations and Analytics
Laurie Chandler, Director, Bonner Center for Community Engagement
Sue Dudt, Director, Career Development
Angel Mason, Director of Athletics
Haley Morgan Smith, Chief Diversity and Belonging Officer

Chief of Staff

Allison Moore, Director, Community Engagement and Education, Oak Hill and The Martha Berry Museum
Rebecca Jane Owens, Director of Hospitality and Event Services
Rachel Taylor McLucas, Curator and Interim Director of Oak Hill and The Martha Berry Museum

Academic Affairs

David F. Slade, Provost
Casey Allan Dexter, Interim Dean of Academic Services
Lauren Raymer Heller, Dean, Campbell School of Business
Alan Hughes, Dean, Charter School of Education and Human Sciences
Gabriel Barreneche, Dean, Evans School of Humanities, Arts and Social Sciences
Alice Suroviec, Dean, School of Mathematical and Natural Sciences
Tamikalon LyJeana Bond, Director of Berry College Child Development Center
Jill Ashdown Cochran, Director, Teacher Education
Susan Conradsen, Director, Women's and Gender Studies
Laura Taylor, Director, Research and Sponsored Programs
Elizabeth Davis, Director, International Experiences
Bryce E. Durbin, Registrar and Director of Institutional Research
Carolyn Miller Reilly, Director, Division of Nursing
Coleman Fannin, Acting Director, Honors Program
Christina Lori Frederick, Director, Berry College Elementary and Middle School
Sarah Wells Kaufman, Associate Director of Academic Transitions
Melissa King, Director, The Writing Center
Nancy Johnston Mercer, Assistant Dean and Director of M.B.A. Marketing and Admissions, Campbell School of Business
Katrina Meehan, Associate Director, Accessibility Resources
Tammera Race, Director, Memorial Library
Robert Douglas Reimer, Director, Berry Center for Integrity and Leadership
Anna Sharpe, Dean, Student Success

Administrative Officers and Staff, 2023-2024 (Continued)

Advancement and Alumni

Vacant, Vice President for Advancement
Scott Breithaupt, Associate Vice President of Campaign and Leadership Giving
Heather Cloud, Director, Mid-Level Giving
Cecily Crow, Director, Alumni Relations
Jean Druckenmiller, Assistant Vice President for Alumni Engagement and Development
Brenda Jenkins, Director, Advancement Marketing Operations and Services
Jennifer Schaknowski, Director, Senior Director, Marketing and Communications
Stacey Jones Spillers, Director, Foundation Relations and Strategic Partnerships
Dawn Tolbert, Director, Advancement Communications

Business Services and Finance

Brian I. Erb, Vice President for Finance
Drew Allison, Director, Enterprise Systems
Ryan Matthew Chesley, Chief, Campus Police
Dan Boyd, Director, Information Security
Jeffrey Todd Bradford, Director, Physical Plant
Leah Danielle Cobb, Director, Auxiliary Initiatives and Partnerships
Amy Cornelieus, Director, User Support
Eddie Elsberry, Director, Sustainability and Environmental Compliance
Debbie Emory, Director, Auditing, Compliance, and Investment Services
Penny Evans-Plants, Chief Information Officer
Jason Murphine, Director, IT Infrastructure
Kim Melton, Director, Budget and Student Financial Services
Wayne Phipps, Director, Human Resources
Danny Price, In-House Legal Counsel
Brad T. Reeder, Assistant Vice President for Financial Services
Zach Sherwin, Director, Enterprise Analytics
Gary Will, Assistant Vice President for Campus Safety and Land Management

Enrollment Management

Andrew R. Bressette, Vice President, Enrollment Management
Glenn Getchell, Director, Admissions
Noemi Sarrion-Cortes, Director, Financial Aid
Marcia McConnell, Director, New Student Financial Aid, Admissions
Kinsey Stout, Director, Engagement and Experiential Marketing
Katie Farmer, Director, Operations

Administrative Officers and Staff, 2023-2024 (Continued)

Marketing and Communications

Nancy Rewis, Vice President, Marketing and Communications

Natorio Howard, Director, Creative Services

Cameron Jordan, Assistant Vice President for Marketing and Communications

Chris Reynolds Kozelle, Director, Public Relations

Brant Sanderlin, Director, Photography and Videography

Memorial Library

Tammera Race, Director, Memorial Library

Jeremy Worsham, Associate Director, Instruction Design and Technology Librarian

Student Affairs

Lindsey Taylor, Vice President for Student Affairs and Dean of Students

David Eller, Director, Student Involvement

Ashley Demonbreun-Chapman, Director, The BRAVE Project

Meredith Johnson, Assistant Dean of Students and Whitehead Scholars Coordinator

Michael McElveen, Assistant Dean of Student Wellness

Victor Morales, Director, Recreation

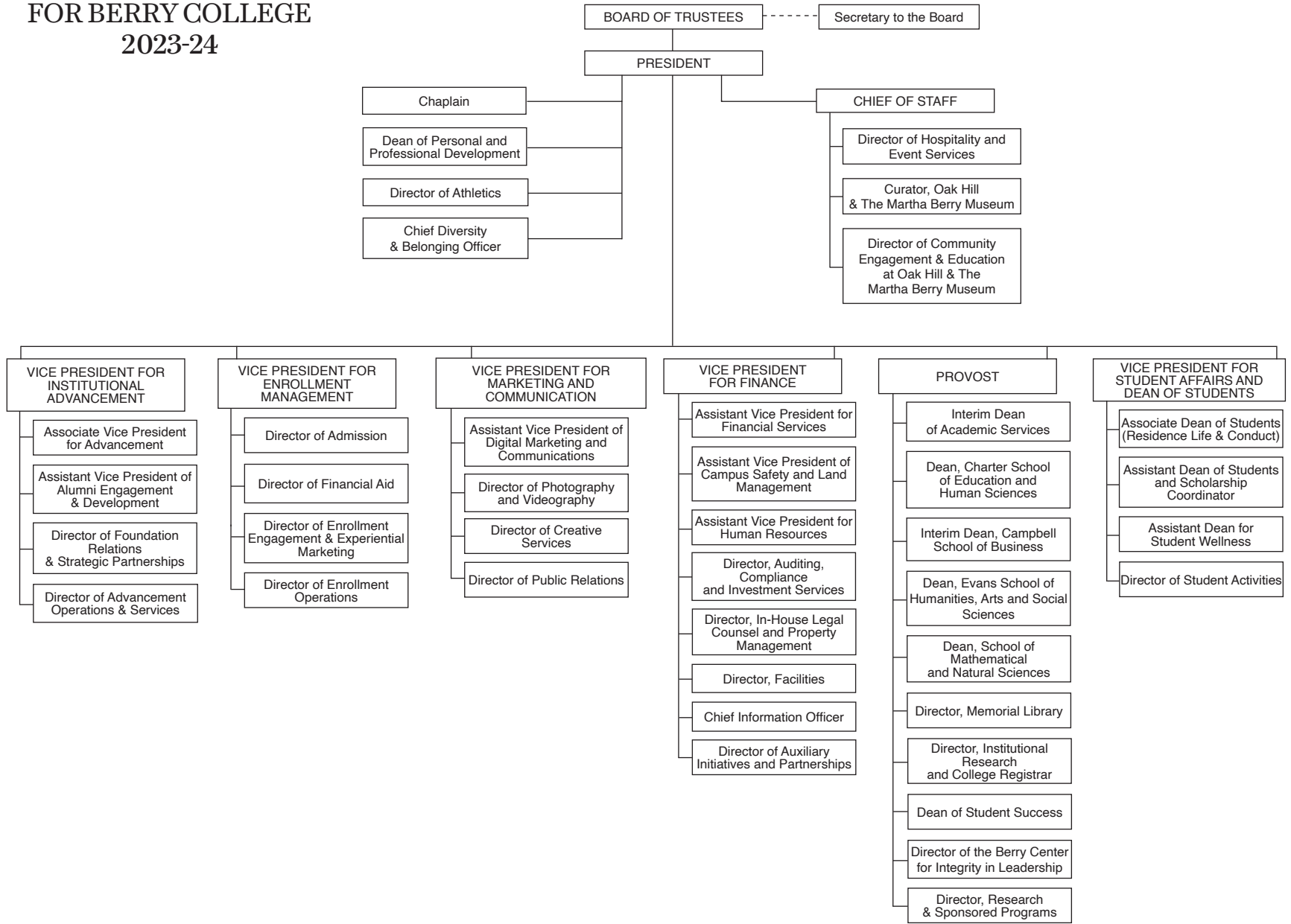
Lindsay Norman, Associate Dean of Students

Carley Price, Director, Counseling Center

Stephen Swieton, Director, Residence Life

Lauren Wehunt, Director, Health Center

ORGANIZATIONAL CHART FOR BERRY COLLEGE 2023-24



Degrees and Majors
2023-2024

Bachelor of Arts

Art (*Art Education*²; *Art History*; *Studio Art*)
 Communication (*Communication & Media Studies*;
Digital Storytelling; *Filmmaking & Cinematic Arts*;
Public Relations)
 Creative Writing
 Economics
 English¹
 Environmental Science and Studies
 (*Environmental Studies*)
 French² (*French*; *French Studies*)
 German² (*German*; *German Studies*)
 History¹
 History Plus (*Enterprise*; *The Environment*; *Gender*;
Global Issues; *Justice*; *The Public*; *Technology*; *Writing*)
 Individually Designed
 International Affairs
 Music
 Political Science
 Psychology
 Religion and Philosophy (*Biblical & Christian Studies*;
Ethics & Value Theory; *Philosophy*; *Religious Studies*)
 Sociology and Anthropology (*Anthropology*; *Sociology*)
 Spanish²
 Theatre

Bachelor of Music

Music Education²
 Music Performance
 Music with Elective Studies in Business

Bachelor of Science

Accounting
 Animal Science (*Pre-Vet/Pre-Professional Science*;
Pre-Production/ Management)
 Applied Physics
 Biochemistry
 Biology¹ (*Cellular and Biomedical*; *Integrative Biology*;
Wildlife, Ecology, and Conservation)
 Chemistry¹
 Computer Science
 Creative Technologies
 Data Analytics

Other: Bachelor of Science 3-2 Programs

Dual-Degree Engineering program with Georgia Institute of Technology
 Dual-Degree Engineering program with Kennesaw State University

Bachelor of Science (Continued)

Data Science
 Economics
 Elementary Education (P-5)
 Environmental Science and Studies
 (*Environmental Science*)
 Exercise Science
 Finance
 Individually Designed
 International Business (Dual Major)
 Management
 Marketing
 Mathematics¹ (*Mathematics*;
*Mathematics Education*¹)
 Middle-Grades Education (4-8)
 Physics¹ (*General Physics*; *Professional Track*)
 Political Science¹
 Psychology
 Secondary Education (Dual Major)
 Sociology and Anthropology (*Anthropology*;
Sociology)
 Sport Leadership and Strategy

Bachelor of Science Nursing

Nursing

Master of Business Administration

General Business

Master of Arts in Teaching

Secondary Education (P-12)

Master of Education

Curriculum and Instruction
 Early Childhood Education
 Educational Leadership
 Middle-Grades Education
 English
 English for Speakers of Other Languages
 (ESOL) Endorsement
 Reading Endorsement

Education Specialist

Curriculum and Instruction
 Educational Leadership

¹Teacher certification available at secondary level if combined with secondary education major.

²Teacher certification, grades P-12 if combined with secondary education major.

Undergraduate Minors
2023-2024

Animal Science	History
Anthropology	International Affairs
Applied Behavior Analysis	Latin American and Caribbean Studies
Art	Legal Studies
Biology	Mathematics
Business	Music
Chemistry	Musical Theatre
Communication Studies	One Health Science
Computer Science	Philosophy
Creative Technologies	Physics
Creative Writing	Political Science
Dance	Psychology
Data Analytics	Public Relations
Digital Storytelling	Religion
Economics	Social Entrepreneurship
English	Sociology
Entrepreneurship and Innovation	Spanish
Environmental Science and Studies	Strength and Conditioning
Family Studies	Teaching English as a Foreign Language
French	Theatre
Geology	Women's and Gender Studies
German	

Source of data: *Berry College Undergraduate Catalog, 2023-2024*

Section II

Student Information

Comparative Enrollment Statistics
2022-2023 through 2023-2024

Student Category	Graduate						Undergraduate						Total					
	SUMMER		FALL		SPRING		SUMMER		FALL		SPRING		SUMMER		FALL		SPRING	
	2022	2023	2022	2023	2023	2024	2022	2023	2022 ^a	2023 ^b	2023	2024	2022	2023	2022	2023	2023	2024
FULL TIME	37	18	40	53	13	19	18	15	2,221	2,197	2,099	2,113	55	33	2,261	2,250	2,112	2,132
Men	8	5	11	12	7	9	7	3	817	814	766	783	15	8	828	826	773	792
Women	29	13	29	41	6	10	11	12	1,404	1,374	1,333	1,321	40	25	1,433	1,415	1,339	1,331
Another Gen	0	0	0	0	0	0	0	0	0	9	0	9	0	0	0	9	0	9
PART TIME	96	53	77	91	84	116	515	584	29	35	32	37	611	637	106	126	116	153
Men	27	21	24	25	27	29	159	185	11	18	14	16	186	206	35	43	41	45
Women	69	32	53	66	57	87	356	399	18	15	18	20	425	431	71	81	75	107
Another Gen	0	0	0	0	0	0	0	0	0	2	0	1	0	0	0	2	0	1
TOTAL	133	71	117	144	97	135	533	599	2,250	2,232	2,131	2,150	666	670	2,367	2,376	2,228	2,285
Men	35	26	35	37	34	38	166	188	828	832	780	799	201	214	863	869	814	837
Women	98	45	82	107	63	97	367	411	1,422	1,389	1,351	1,341	465	456	1,504	1,496	1,414	1,438
Another Gen	0	0	0	0	0	0	0	0	0	11	0	10	0	0	0	11	0	10
FULL-TIME EQUIVALENT	84.8	47.7	93.1	113.7	69.7	103.2	216.2	250.7	2,235.7	2,216.1	2,113.7	2,130.1	300.9	298.3	2,328.8	2,329.8	2,183.3	2,233.3

^a Fall 2022 undergraduate includes seven part-time exclusively auditing courses, not reported to IPEDS.

^b Fall 2023 undergraduate includes six part-time exclusively auditing courses, not reported to IPEDS.

Source of data: Registrar's Enrollment Report

Historical Enrollment
Undergraduate and Graduate
1989-90 to 2023-2024

Year	Fall						Spring					
	Undergraduate		Graduate		Total		Undergraduate		Graduate		Total	
	Headcount	FTE	Headcount	FTE	Headcount	FTE	Headcount	FTE	Headcount	FTE	Headcount	FTE
1989-90	1,714	1,680.0	110	48.0	1,824	1,728.0	1,580	1,547	135	69	1,715	1,616.0
1990-91	1,683	1,651.0	122	52.0	1,805	1,703.0	1,528	1,504	148	70	1,676	1,574.0
1991-92	1,609	1,583.0	131	68.0	1,740	1,651.0	1,471	1,450	141	76	1,612	1,526.0
1992-93	1,628	1,605.0	117	46.0	1,628	1,605.0	1,528	1,507	141	76	1,644	1,566.0
1993-94	1,675	1,648.0	113	45.0	1,788	1,693.0	1,509	1,482	164	73	1,673	1,555.0
1994-95	1,725	1,705.0	151	79.0	1,876	1,784.0	1,598	1,573	181	99	1,779	1,672.0
1995-96	1,756	1,733.0	218	108.0	1,974	1,841.0	1,621	1,594	230	126	1,851	1,720.0
1996-97	1,855	1,826.0	218	118.0	2,085	1,948.0	1,716	1,679	227	114	1,943	1,793.0
1997-98	1,876	1,854.0	195	96.0	2,071	1,950.0	1,763	1,740	169	82	1,932	1,822.0
1998-99	1,942	1,917.0	169	67.0	2,111	1,984.0	1,817	1,784	152	88	1,969	1,872.0
1999-00	1,899	1,884.0	190	73.0	2,089	1,957.0	1,779	1,781	178	76	1,957	1,857.0
2000-01	1,825	1,796.0	208	109.0	1,846	1,822.0	1,716	1,695	177	105	1,893	1,800.0
2001-02	1,846	1,822.0	192	105.0	2,053	1,927.0	1,739	1,712	180	107	1,919	1,819.0
2002-03	1,898	1,878.0	155	89.0	2,053	1,967.0	1,770	1,749	160	92	1,930	1,841.0
2003-04	1,895	1,874.0	150	84.0	2,045	1,958.0	1,775	1,750	157	96	1,932	1,846.0
2004-05	1,878	1,851.0	130	76.0	2,008	1,927.0	1,759	1,729	127	76	1,886	1,805.0
2005-06	1,864	1,846.0	107	69.0	1,971	1,915.0	1,729	1,712	140	81	1,869	1,793.0
2006-07	1,718	1,697.0	124	72.0	1,842	1,769.0	1,600	1,581	122	77	1,722	1,658.0
2007-08	1,737	1,714.0	121	75.0	1,858	1,789.0	1,616	1,597	104	62	1,720	1,659.0
2008-09	1,686	1,667.0	109	71.0	1,795	1,738.0	1,581	1,559	130	82	1,711	1,641.0
2009-10	1,777	1,753.0	145	91.0	1,922	1,844.0	1,678	1,652	138	86	1,816	1,738.0
2010-11	1,928	1,903.0	159	106.0	2,087	2,009.0	1,792	1,774	145	96	1,937	1,870.0
2011-12	1,944	1,927.0	149	100.0	2,093	2,027.0	1,816	1,804	144	108	1,960	1,912.0
2012-13	2,041	2,021.0	125	80.0	2,166	2,101.0	1,946	1,923	114	78	2,060	2,000.0
2013-14	2,141	2,121.0	82	58.0	2,223	2,180.0	2,023	2,003	104	71	2,127	2,074.0
2014-15	2,085	2,070.8	92	91.0	2,177	2,134.2	1,969	1,950	123	82	2,092	2,032.0
2015-16	2,123	2,095.7	122	97.0	2,245	2,192.7	2,034	2,005	146	112	2,180	2,117.7
2016-17	2,073	2,058.6	101	78.7	2,174	2,137.3	1,960	1,946	101	76	2,061	2,021.1
2017-18	1,978	1,960.1	132	95.6	2,110	2,055.6	1,886	1,866	117	101	2,003	1,966.9
2018-19	1,936	1,917.5	78	60.8	2,014	1,978.3	1,871	1,838	105	77	1,976	1,914.9
2019-20	1,943	1,923.7	91	71.3	2,034	1,995.0	1,867	1,838	115	93	1,982	1,931.0
2020-21	2,006	1,992.1	119	96.7	2,125	2,088.8	1,927	1,910	118	96	2,045	2,005.7
2021-22	2,177	2,166.2	131	105.4	2,308	2,271.6	2,061	2,042	136	104	2,197	2,145.6
2022-23	2,250	2,235.7	117	93.1	2,367	2,328.8	2,131	2,114	97	70	2,228	2,183.3
2023-24	2,232	2,216.1	144	113.7	2,376	2,329.8	2,150	2,130	135	103	2,285	2,233.3

Source of data: Registrar's Enrollment Report to President (Fall and Spring semesters)

Undergraduate Program Enrollment History by Schools
and Undeclared Majors¹
2019-2020 Through 2023-2024

Term	Campbell School of Business ²	Charter School of Education and Human Sciences ³	Evans School of Humanities, Arts, and Social Sciences	School of Mathematics and Natural Sciences	Individually Designed	Undeclared	TOTAL
Summer 2019*	81	164	85	117	1	4	452
Fall 2019	334	494	396	625	1	72	1,922
Spring 2020	332 747	488 1,146	385 866	574 1,316	1 3	58 134	1,838 4,212
Summer 2020*	92	156	97	114	0	12	471
Fall 2020	343	521	402	640	0	89	1,995
Spring 2021	362 797	519 1,196	397 896	587 1,341	0 0	48 149	1,913 4,379
Summer 2021*	87	147	79	138	0	16	467
Fall 2021	347	567	425	716	1	117	2,173
Spring 2022	366 800	541 1,255	447 951	645 1,499	3 4	55 188	2,057 4,697
Summer 2022*	106	164	99	155	0	10	534
Fall 2022	377	558	435	725	2	146	2,243
Spring 2023	395 878	537 1,259	440 974	673 1,553	2 4	74 230	2,121 4,898
Summer 2023	381	534	435	681	2	88	2,121
Fall 2023	384	540	439	705	1	150	2,219
Spring 2024	416 1,181	543 1,617	462 1,336	646 2,032	1 4	67 305	2,135 6,475
<i>Percent Increase/Decrease Since:</i>							
Fall 2022	1.9%	-3.2%	0.9%	-2.8%	-50.0%	2.7%	-1.1%
2022-2023	34.5%	28.4%	37.2%	30.8%	0.0%	32.6%	32.2%

¹Does not include students in joint enrollment, nondegree seeking majors, second or third majors, and co-op program.

²Prebusiness undeclared students are included in the Campbell School of Business.

*Summer semester include more than one block of classes.

Source of data: Registrar's database-major/minor report; and Analysis of Majors and Minors compiled by Institutional Research

Graduate Program Enrollment History
2013-2014 Through 2023-2024

Term	M.B.A.		M.A.T.		M.Ed.		Ed.S.		TOTAL	
Summer 2013	18		19		20		18		75	
Fall 2013	24		25		14		19		82	
Spring 2014	23	65	25	69	11	45	45	82	104	261
Summer 2014	13		14		6		28		61	
Fall 2014	23		22		9		38		92	
Spring 2015	22	58	20	56	8	23	73	139	123	276
Summer 2015	13		10		4		82		109	
Fall 2015	23		10		11		78		122	
Spring 2016	21	57	8	28	10	25	107	267	146	377
Summer 2016	14		4		14		52		84	
Fall 2016	23		4		6		68		101	
Spring 2017	22	59	5	13	0	20	74	194	101	286
Summer 2017	16		0		2		111		129	
Fall 2017	30		0		0		102		132	
Spring 2018	32	78	0	0	8	10	77	290	117	378
Summer 2018	26		0		31		72		129	
Fall 2018	41		0		26		11		78	
Spring 2019	41	108	0	0	44	101	20	103	105	312
Summer 2019	27		0		51		51		129	
Fall 2019	38		0		26		27		91	
Spring 2020	42	107	0	0	24	101	49	127	115	335
Summer 2020	24		0		30		76		130	
Fall 2020	46		0		15		58		119	
Spring 2021	43	113	0	0	14	59	61	195	118	367
Summer 2021	37		0		29		74		140	
Fall 2021	53		0		16		62		131	
Spring 2022	51	141	0	0	17	62	68	204	136	407
Summer 2022	29		0		29		75		133	
Fall 2022	44		0		14		59		117	
Spring 2023	46	119	0	0	9	52	42	176	97	347
Summer 2023	31		0		9		31		71	
Fall 2023	44		0		31		69		144	
Spring 2024	45	120	0	0	33	73	57	157	135	350
<i>Percent Increase/ Decrease Since 2022-2023</i>	<i>0.8%</i>		<i>N/A</i>		<i>40.4%</i>		<i>-10.8%</i>		<i>0.9%</i>	

Source of data: Registrar

Geographic Distribution of **Total Enrollment**

Fall 2018 through Fall 2023

As of August 31, 2023

Area	Percent of <i>Total</i> Students					
	2018	2019	2020	2021	2022	2023
New England	0.4	0.4	0.5	0.6	0.6	0.6
Middle Atlantic	1.8	1.5	1.4	1.4	1.5	1.5
Southeast	80.6	81.4	83.1	83.2	83.9	83.6
North Central	1.8	1.6	1.6	2.0	2.2	1.9
South Central	13.5	13.0	11.7	11.3	10.1	10.6
Western	0.7	0.7	0.7	0.9	1.1	1.1
Guam	0.0	0.0	0.0	0.0	0.0	0.0
Puerto Rico & Virgin Islands	0.0	0.0	0.0	0.1	0.1	0.1
Other (U.S. citizens living abroad) ^a	0.2	0.2	0.2	0.1	0.1	0.2
International ^b	0.8	1.1	0.8	0.4	0.4	0.5
Georgia	67.7	70.2	73.0	73.5	75.3	75.6
(Floyd County)	8.3	8.8	9.7	8.2	8.5	8.4
(Atlanta Area) ^c	23.7	24.8	26.2	23.8	25.7	24.4
Alabama ^d	4.0	4.0	3.3	3.2	3.1	3.7
Florida ^d	7.0	6.3	5.0	4.7	4.1	3.8
North Carolina ^d	3.3	2.6	2.4	2.6	2.2	2.1
South Carolina ^d	1.3	1.4	1.5	1.5	1.4	1.5
Tennessee ^d	7.1	6.7	6.2	5.7	4.9	4.9
Other States ^e	8.5	7.4	7.5	8.1	8.4	7.9

^aOther (United States citizens living abroad) include United States citizens from military bases abroad, missionaries abroad, etc.

^bThe registrar's geographic distribution report is used to calculate the percentages for this table.

International students "Citizen of" students (defined by IPEDS as Nonresident Aliens) listing their Berry addresses and other U.S. addresses have been regrouped with their "Citizen of" address.

NOTE: The percentage of Berry's *undergraduate* enrollment who represent the *undergraduate* international population (Nonresident Aliens "citizen of") were 2018, 0.8; 2019, 1.1; 2020, 0.8; 2021, 0.4; 2022, 0.4; and 2023, 0.5.

^cAtlanta Area includes Clayton, Cobb, DeKalb, Douglas, Fayette, Fulton, and Gwinnett Counties.

^dContiguous states; also the largest in terms of out-of-state enrollment.

^eOther states exclude Alabama, Florida, Georgia, North Carolina, South Carolina, Tennessee, United States Citizens living abroad, and International Students.

Source of data: Institutional Research; Registrar

Total Undergraduate Enrollment by Ethnic Classification
Fall 2007 through Fall 2023

Year	Nonresident Alien (International)	American Indian or Alaska Native	Asian	Asian or Pacific Islander	Black or African American	Hispanics of Any Race	Native Hawaiian or Other Pacific Islander	Two or More Races	Total Students of Color ¹	White	Race and Ethnicity Unknown	Total Undergraduates
2007	37	3	N/A	28	57	40	N/A	N/A	128	1,542	30	1,737
2008	38	4	N/A	27	76	41	N/A	N/A	148	1,457	43	1,686
2009	31	3	N/A	38	86	60	N/A	N/A	187	1,481	78	1,777
2010	31	3	42	N/A	95	77	0	13	217	1,606	61	1,915
2011	26	3	42	N/A	92	91	1	20	249	1,617	52	1,944
2012	23	5	34	N/A	85	107	2	40	273	1,697	48	2,041
2013	19	4	23	N/A	84	123	2	56	292	1,798	32	2,141
2014	19	2	26	N/A	90	132	3	58	311	1,726	29	2,085
2015	16	5	30	N/A	98	137	1	68	339	1,715	53	2,123
2016	13	6	27	N/A	91	135	0	66	325	1,672	63	2,073
2017	15	5	41	N/A	101	130	1	66	344	1,574	45	1,978
2018	16	7	36	N/A	107	134	1	69	354	1,522	44	1,936
2019	22	7	42	N/A	136	132	0	76	393	1,512	16	1,943
2020	16	5	50	N/A	148	160	0	106	469	1,512	9	2,006
2021 ^a	9	7	57	N/A	176	194	0	99	533	1,621	9	2,172
2022 ^b	10	5	65	N/A	182	232	2	106	592	1,629	12	2,243
2023 ^c	11	4	62	N/A	190	224	3	105	588	1,611	16	2,226

¹Total students of color includes American Indian or Alaska Native; Asian or Pacific Islander; Black, non-Hispanic; Hispanic; for 2007 through 2009.

IPEDS revised ethnicity and race categories beginning with 2010. Total students of color includes American Indian or Alaska Native; Asian; Black or African American; Hispanics of Any Race; Native Hawaiian or Other Pacific Islander; and two or more races.

^aFive students exclusively auditing courses are excluded from the undergraduate enrollment, based on IPEDS reporting procedures.

^bSeven students exclusively auditing courses are excluded from the undergraduate enrollment, based on IPEDS reporting procedures.

^cSix students exclusively auditing courses are excluded from the undergraduate enrollment, based on IPEDS reporting procedures.

Source of data: IPEDS Fall Enrollment Report

Total Graduate Enrollment by Ethnic Classification
Fall 2007 through Fall 2023

Year	Nonresident Alien (International)	American Indian or Alaska Native	Asian	Asian or Pacific Islander	Black or African American	Hispanics of Any Race	Native Hawaiian or Other Pacific Islander	Two or More Races	Total Students of Color ¹	White Non-Hispanic	Race Unknown	Total Graduates
2007	5	0	N/A	0	3	2	N/A	N/A	5	110	1	121
2008	7	0	N/A	0	3	3	N/A	N/A	6	96	0	109
2009	2	0	N/A	0	6	4	N/A	N/A	10	132	1	145
2010	1	1	0	N/A	6	3	0	2	12	144	2	159
2011	1	1	1	N/A	7	2	0	0	11	130	7	149
2012	1	1	1	N/A	4	2	0	0	8	109	7	125
2013	1	0	0	N/A	6	1	0	1	8	70	3	82
2014	0	0	0	N/A	3	2	0	4	9	80	3	92
2015	0	0	0	N/A	15	4	0	1	20	98	4	122
2016	0	0	0	N/A	19	5	0	0	24	76	1	101
2017	0	0	0	N/A	20	3	0	0	23	104	5	132
2018	0	0	1	N/A	6	4	0	0	11	67	0	78
2019	1	0	0	N/A	5	2	0	4	11	79	0	91
2020	0	0	2	N/A	18	3	0	4	27	89	3	119
2021	1	0	3	N/A	33	7	0	3	46	80	4	131
2022	0	0	2	N/A	20	7	0	2	31	83	3	117
2023	0	1	4	N/A	15	5	0	4	29	113	2	144

¹Total students of color includes American Indian or Alaska Native; Asian or Pacific Islander; Black, non-Hispanic; Hispanic; for 2007 through 2009.

IPEDS revised ethnicity and race categories beginning with 2010. Total students of color includes American Indian or Alaska Native; Asian;

Black or African American; Hispanics of Any Race; Native Hawaiian or Other Pacific Islander; and two or more races.

Source of data: IPEDS Fall Enrollment Report

Undergraduate Enrollment Analysis
of Other Countries Represented¹
2023-2024

Country	Number of <i>Undergraduate</i> Students 2023-2024	
	Nonresident Aliens	Resident Alien
Albania		1
Costa Rica	6	
Denmark		
El Salvador		1
Ethiopia		2
Germany	1	
Haiti		1
Hungary	1	
India		2
Jamaica		1
Korea, Democratic People's Republic of	1	1
Mexico	1	
Myanmar		2
Nepal		
Nigeria		1
Pakistan		1
Philippines		1
Russian Federation		
South Africa		2
Switzerland	1	
United Kingdom of Great Britain and Northern Ireland		
Number of international students:	11	16
Number of countries represented:	6	12

*Unduplicated head count for academic year.

¹"Citizen of" (Nonresident Alien) or "Country of Origin" (Resident Alien), and "ethnicity" category in Jenzabar database

²Nonresident Alien exchange students enrolled for both fall and spring semesters.

Source of data: Registrar's geographic enrollment report

Graduate Enrollment Analysis
of Other Countries Represented¹
2023-2024

Country	Number of <i>Graduate</i> Students 2023-2024*	
	Nonresident Alien	Resident Alien
Number of international students:		1
Number of countries represented:		1

*Unduplicated head count for academic year.

¹"Citizen of" (Nonresident Alien) or "Country of Origin" (Resident Alien), and "ethnicity" category in Jenzabar database

Source of data: Registrar's geographic enrollment report

SAT/ACT Scores of Entering First-Year Students
Fall 2018 through Fall 2023

Score Range	Fall-Semester Percentage						Change in Percentage Points		Change in Percentage Points	
	2018 ^a	2019	2020 ^b	2021	2022	2023	↑ ↓ Since 2018	↑ ↓ Since 2022		
SAT										
≥ 1270	36.1	32.6	21.1	35.2	29.1	26.5	↓ 9.6	↓ 2.6		
≥ 1180	60.1	57.0	48.3	61.5	59.7	56.1	↓ 4.0	↓ 3.6		
≥ 1100	83.7	79.7	73.5	82.4	82.1	79.6	↓ 4.1	↓ 2.5		
ACT Composite										
≥ 29	30.1	38.9	32.3	39.0	27.0	27.7	↓ 2.4	↓ 0.7		
≥ 26	56.2	66.6	60.6	65.7	51.8	51.3	↓ 4.9	↓ 0.5		
≥ 23	79.3	87.0	83.7	84.9	73.0	80.7	↑ 1.4	↑ 7.7		

^aSAT05 scores converted to new SAT16 scale.

^bBeginning in fall 2020, test scores were no longer required but were considered if submitted. Percent of scores based on number submitting scores for each test.

Source of data: Admissions

High School GPA of Entering First-Year Students
Fall 2018 through Fall 2023

Score Range	Fall-Semester Percentage						Change in Percentage Points		Change in Percentage Points	
	2018	2019	2020	2021	2022	2023	↑ ↓ Since 2018	↑ ↓ Since 2022		
≥ 3.5-4.0	71.1	69.7	70.4	80.0	78.2	83.9	↑ 12.8	↑ 5.7		
≥ 3.0-4.0	93.9	93.6	94.5	97.0	98.6	98.4	↑ 4.5	↓ 0.2		
≥ 2.5-4.0	98.4	99.5	99.5	99.0	99.7	99.7	↑ 1.3	0.0		

Source of data: Admissions

This page intentionally left blank.

Fall—First-Year Students¹
 Berry College Retention and Graduation Rates
Official Date: Retained as of August 31, 2023
Graduated as of August 2, 2024

First-Year Students Entered (Fall)		Number/Percent Retained						Number/Percent Graduated ²											
		Second Year		Third Year		Fourth Year		Fifth Year		Sixth Year		≤ Four Years		≤ Five Years		≤ Six Years		To Date	
Year	No.	No.	%	No.	%	No.	%	No.	%	No.	%	No.	%	No.	%	No.	%	No.	%
2001	538	423	79	345	64	313	58	46	9	2	.4	274	51	325	60	329	61	332	62
2002	566	429	76	369	65	335	59	56	10	3	1	280	50	339	60	342	60	344	61
2003	505	388	77	323	64	301	60	52	10	3	.6	240	48	292	58	299	59	300	59
2004	514	403	78	332	65	306	60	44	9	4	1	262	51	305	59	309	60	313	61
2005	513	386	75	318	62	290	57	53	10	3	1	226	44	284	55	291	57	293	57
2006	428	325	76	286	69	264	62	40	9	4	1	221	52	259	61	264	62	266	62
2007	537	417	78	343	64	313	58	46	9	5	1	269	50	313	58	323	60	325	61
2008	448	333	74	290	65	266	59	24	5	3	1	243	54	273	61	276	62	278	62
2009	569	443	78	387	68	355	62	28	5	2	.4	315	55	360	63	362	64	364	64
2010	653	515	79	451	69	414	63	34	5	2	.3	386	59	423	65	428	66	429	66
2011	557	420	75	371	67	346	62	31	6	1	.2	319	57	353	63	357	64	357	64
2012	618	491	79	434	70	402	65	33	5	4	.6	373	60	403	65	409	66	409	66
2013	672 *	531	79	478	71	441	66	30	4	3	.4	422	63	456	68	466	69	467	70
2014	568 * ^a	473	83	426	75	389	68	33	6	1	.2	357	63	389	69	399	70	400	71
2015	575 *	487	85	429	75	402	70	25	4	4	1	380	66	406	71	415	72	416	73
2016	534 * ^b	418	78	358	67	334	63	18	3	0	0	325	61	344	65	345	65	347	65.1
2017	553 * ^c	464	84	422	76	383	69	26	5	2	.4	374	68	400	72	408	74	408	74
2018	509 *	424	83	372	73	337	66	27	5	2	.4	319	63	348	69	353	69		
2019	577	486	84	435	75	387	67	21	4			377	65	399	69				
2020	619 *	525	85	466	75	408	66					400	65						
2021	729 ^d	606	83	546	75							36	5						
2022	634	526	83									1	0.2						
2023	577																		

Source of data: Institutional Research; Registrar

*IPEDS Exclusions to select cohorts due to student deaths (FA13, FA14, FA15, FA16, FA17, FA18, and FA20). Adjustments have been made to retention and graduation rates based on the term of students' death (adjustments in italics in table above).

¹Includes students entering in the fall semester who may bring with them some credit hours gained from AP credit, CLEP, or Joint Enrollment.

²Retention calculations include students who withdraw to complete dual-degree nursing or engineering degrees. Students who graduate from these dual-degree programs are included in the graduation rates for their cohort.

^a Fall 2014 Cohort: Sixth-year graduation rates updated to include two students who graduated but were not on the original graduation list.

^b Fall 2016 sixth-year graduation rate updated on January 19, 2023, due to one student degree conferred date changing to December 2022.

^c Fall 2017 fifth-year graduation rate updated on January 19, 2023, due to one student degree conferred date changing to December 2022.

^dFall 2021 cohort is the largest first-time, first-year entering class in Berry College's history.

Transfer Students
 Berry College Retention and Graduation Rates
Official Date: Retained as of August 31, 2023
Graduated as of August 2, 2024

Transfer Students Entered (Fall)		Number/Percent Retained								Number/Percent Graduated ¹									
		Second Year		Third Year		Fourth Year		Fifth Year		≤ Two Years		≤ Three Years		≤ Four Years		≤ Five Years		To Date	
Year	No.	No.	%	No.	%	No.	%	No.	%	No.	%	No.	%	No.	%	No.	%	No.	%
2001	72	53	74	32	44	5	7	1	1	19	26	45	63	48	67	50	69	50	69
2002	72	55	76	32	44	8	11	0	0	14	19	36	50	44	61	44	61	44	61
2003	70	54	77	34	49	9	13	0	0	13	19	35	50	44	63	46	66	47	67
2004	66	53	80	32	48	5	8	2	3	16	24	40	61	47	71	49	74	49	74
2005	69	45	65	34	49	8	12	1	1	11	16	33	48	42	61	44	64	44	64
2006	56	44	79	30	54	9	16	2	4	9	16	28	50	40	71	41	73	41	73
2007	44	35	80	27	61	11	25	2	5	5	11	23	52	32	73	32	73	33	75
2008	63	48	76	32	51	8	13	1	2	10	21	27	43	34	54	34	54	36	57
2009	53	39	74	31	58	4	8	2	4	4	8	29	55	38	72	40	75	40	75
2010	41	28	68	24	59	4	10	1	2	4	10	28	68	31	76	31	76	32	78
2011	46	32	70	22	48	7	15	0	0	6	13	22	48	29	63	29	63	29	63
2012	39	29	74	25	64	5	13	0	0	4	10	22	56	27	69	28	72	28	72
2013	40	31	78	19	48	3	8	0	0	10	25	27	68	30	75	30	75	30	75
2014	37	29	78	24	65	4	11	1	3	4	11	23	62	26	70	27	73	27	73
2015	39	33	85	23	59	5	13	0	0	7	18	23	59	28	72	28	72	28	72
2016	39	29	74	19	49	5	13	0	0	10	26	24	62	29	74	29	74	29	74
2017	42	33	79	22	52	4	10	0	0	8	19	26	62	30	71	30	71	30	71
2018	46	40	87	21	46	4	9	0	0	15	33	32	70	36	78	36	78	36	78
2019	35	22	63	12	34	5	14	1	3	7	20	13	37	17	49	18	51		
2020	28	25	89	25	89	8	29			7	25	17	61	24	86				
2021	32	27	84	17	63					7	22	21	66						
2022	24	23	96							3	13								
2023	42																		

¹Retention calculations include students who withdrew to complete dual-degree nursing or engineering degrees (specific cases are included in footnotes below). Students who graduate from these dual-degree programs are included in the graduation rates for their cohort.

Source of data: Institutional Research; Registrar

Age Distribution of
Undergraduate Students
as of August 31, 2023

Age	Percentage of Undergraduates (N=2,232)
17-18	12.1
19	23.8
20	26.4
21	22.0
22	12.7
23-24	2.1
25-29	0.5
30-34	0.1
35-39	0.0
40-44	0.0
45+	0.3
Total	100.0

Average age of all undergraduate = 20

Source of data: Registrar's database

Age Distribution of
Graduate Students
as of August 31, 2023

Age	Percentage of Graduate Students (N=144)
21-25	20.8
26-30	17.4
31-35	12.5
36-40	10.4
41-45	16.0
46-50	13.9
51+	9.0
Total	100.0

Average age of all graduate = 36

Source of data: Registrar's database

Section III

Academic Profile

Number of Undergraduate Majors by Schools
Spring 2019 Through Spring 2024

School	Number of Spring Majors (1st, 2nd, 3rd, and 4th)					
	2019	2020	2021	2022	2023	2024
Campbell School of Business	428	391	430	453	500	516
Charter School of Education and Human Sciences	582	538	580	613	606	626
Evans School of Humanities, Arts, and Social Sciences	494	464	480	519	516	560
School of Mathematical and Natural Sciences	536	599	622	688	738	713
Individually Designed*	3	2	1	3	2	1

*Individually designed majors are reported separately from schools.

Source of data: Institutional Research and Registrar

Summary of Undergraduate Majors and Minors by Schools
Official Counting Date: April 1, 2024

School	Majors					Minors
	First	Second	Third	Fourth	Total	
Campbell School of Business	416	99	1	0	516	211
Charter School of Education and Human Sciences	543	82	1	0	626	235
Evans School of Humanities, Arts, and Social Sciences	462	98	0	0	560	354
School of Mathematical and Natural Sciences	646	65	2	0	713	385
Individually Designed*	1	0	0	0	1	0
Total	2,068	344	4	0	2,416	1,185

*Individually designed majors minors are reported separately from schools.

Source of data: Institutional Research and Registrar

Number of Undergraduate Majors in Rank Order
Official Counting Date: April 1, 2024

Rank	Major/Concentration	Number of (1st, 2nd, and 3rd)	
		Concentrations	Majors
1.	Animal Science		203
	<i>Animal Science (no concentration)</i>	7	
	<i>Pre-Vet/Pre-Professional Science</i>	148	
	<i>Production/Management</i>	48	
2.	Biology		173
	<i>Concentration I</i>	4	
	<i>Cellular and Biomedical</i>	84	
	<i>Integrative Biology</i>	26	
	<i>Wildlife, Ecology, and Conservation</i>	59	
3.	Psychology		158
4.	Exercise Science		135
	<i>Exercise Science (no concentration)</i>	91	
	<i>Allied Health Pre-professional</i>	38	
	<i>Clinical/Research</i>	1	
	<i>Strength and Conditioning</i>	5	
5.	Communication		122
	<i>Communication and Media Studies</i>	8	
	<i>Digital Storytelling</i>	30	
	<i>Filmmaking/Cinematic Arts</i>	28	
	<i>Public Relations</i>	48	
	<i>Sports Communication</i>	7	
	<i>Visual Communication</i>	1	
6.	Management		95
7.	Creative Technologies		94
8.	Nursing		93
9.	Finance		86
9.	Marketing		86
11.	Biochemistry		79
12.	Secondary Education		68
13.	Elementary Education		66
14.	Accounting		61
15.	Environmental Science and Studies		58
	<i>Environmental Science</i>	48	
	<i>Environmental Studies</i>	10	
16.	Political Science		56
17.	Prenursing		48
18.	English		46

Number of Undergraduate Majors in Rank Order – April 1, 2024 (Continued)

Rank	Major/Concentration	Number of (1st, 2nd, and 3rd)	
		Concentrations	Majors
19.	Computer Science		45
19.	Spanish		45
21.	History		44
22.	Dual-Degree Engineering		40
23.	Art		39
	<i>Art Education</i>	11	
	<i>Art History</i>	4	
	<i>Fine Art/Studio</i>	23	
	<i>Art History and Fine Art/Studio</i>	1	
24.	Creative Writing		37
24.	Mathematics		37
	<i>Computer Science</i>	1	
	<i>Mathematics</i>	27	
	<i>Mathematics Education</i>	9	
26.	Chemistry		35
26.	Economics		35
28.	Sport Leadership and Strategy		32
29.	Sociology and Anthropology		28
	<i>Anthropology</i>	15	
	<i>Sociology</i>	8	
	<i>Sociology and Anthropology</i>	5	
30.	Religion and Philosophy		27
	<i>Biblical and Christian Studies</i>	21	
	<i>Ethics and Value Theory</i>	1	
	<i>Philosophy</i>	4	
	<i>Religious Studies</i>	1	
31.	Music Education		25
32.	Prebusiness–Undeclared		24
33.	Data Analytics		22
34.	Applied Physics		19
35.	Music		16
36.	Physics		15
	<i>General Physics</i>	6	
	<i>Professional Track</i>	9	
36.	Sports Administration		15
38.	Environmental Science		14
39.	International Business		13

Table 2-A, Number of Undergraduate Majors in Rank Order – April 1, 2024 (Continued)

Rank	Major/Concentration	Number of (1st, 2nd, and 3rd)	
		Concentrations	Majors
40.	International Affairs		12
40.	Music with Elective Studies in Business		12
42.	Theatre		11
42.	Middle-Grades Education		11
44.	History Plus		8
	<i>History Plus Global Issue</i>	3	
	<i>History Plus Justice</i>	1	
	<i>History Plus the Public</i>	3	
	<i>History Plus Writing</i>	1	
45.	Environmental Studies		7
	<i>Environmental Policy</i>	5	
	<i>Environmental Studies</i>	2	
46.	German		6
	<i>German</i>	5	
	<i>German Studies</i>	1	
47.	Data Science		5
47.	French		5
	<i>French</i>	3	
	<i>French Studies</i>	2	
49.	Music Performance		4
50.	Individually Designed		1
	<i>Entrepreneurial Marketing and Communication</i>	1	
(50. majors total; where applicable, concentrations noted in italics)			
SUBTOTAL			2,416
LESS Second Majors			-344
LESS Third Majors			-4
LESS Students with Two Degrees and Two First Majors			-6
TOTAL DEGREE-SEEKING UNDERGRADUATES			2,062
Joint Enrollment			8
Nondegree			13
Undeclared			67
	<i>Non-Preprofessional</i>	45	
	<i>Preprofessional</i>	22	
TOTAL UNDERGRADUATE STUDENTS			2,150

Number of Graduate Majors
Official Counting Date: April 1, 2024

Degrees/Majors	Number of Graduate	
	Majors	Degrees
GRADUATE STUDENTS:		
M.B.A.		45
<i>General Business</i>	45	
M.Ed.		32
<i>Curriculum and Instruction</i>	30	
<i>Educational Leadership</i>	2	
Ed.S.		52
<i>Curriculum and Instruction</i>	52	
Nondegree		6
<i>Graduate Education</i>	1	
<i>Graduate Specialist</i>	5	
<hr style="border-top: 1px dashed black;"/>		
TOTAL GRADUATE STUDENTS	<i>135</i>	<i>135</i>

Number Undergraduate and Graduate Majors Summary
Official Counting Date: April 1, 2024

Major	Number	
	Majors (1st)*	Students
Undergraduate	2,156	2,150
Graduate	135	135
<hr style="border-top: 1px dashed black;"/>		
Total Students	<i>2,291</i>	<i>2,285</i>

*Includes first major for second degrees; and excludes second and third majors.

Source of data: Institutional Research and Registrar

**Dean's List Summary
(Undergraduates)**

2018-2019 Through 2023-2024
As of June 13, 2024

Session	Number on Dean's List	Number With 4.00	Percent on Dean's List With 4.00	Undergraduate FTE Enrollment	Percent of FTE With 4.00	Percent of FTE on Dean's List
2018-2019						
Summer	4	0	0.0	193	0.0	2.1
Fall	792	152	19.2	1,918	7.9	41.3
Spring	738	135	18.3	1,838	7.3	40.2
2019-2020						
Summer	2	0	0.0	186	0.0	1.1
Fall	821	191	23.3	1,924	9.9	42.7
Spring	861	275	31.9	1,838	15.0	46.8
2020-2021						
Summer	5	1	20.0	195	0.5	2.6
Fall	940	251	26.7	1,992	12.6	47.2
Spring	871	225	25.8	1,910	11.8	45.6
2021-2022						
Summer	10	0	0.0	186	0.0	5.4
Fall	989	255	25.8	2,166	11.8	45.7
Spring	971	251	25.8	2,042	12.3	47.6
2022-2023						
Summer	9	4	44.4	216	1.9	4.2
Fall	1,053	280	26.6	2,236	12.5	47.1
Spring	1,020	272	26.7	2,114	12.9	48.2
2023-2024						
Summer	3	2	66.7	251	0.8	1.2
Fall	1,073	289	26.9	2,216	13.0	48.4
Spring	1,009	300	29.7	2,130	14.1	47.4

Source of data: Institutional Research

Degrees Granted
2010-2011 Through 2023-2024

Years	B.A.	B.Mus.	B.S.	B.S.N.	Bachelor's Total	M.B.A.	M.A.T.	M.Ed.	Ed.S.	Graduate Total	Overall Total
2010-2011 ^a	107	6	263	N/A	376	18	N/A	28	10	56	432
2011-2012 ^b	119	3	213	N/A	335	11	N/A	36	27	74	409
2012-2013 ^c	114	1	291	N/A	406	13	1	21	45	80	486
2013-2014 ^d	119	4	343	N/A	466	14	7	15	17	53	519
2014-2015 ^e	88	4	312	15	419	7	8	8	12	35	454
2015-2016 ^f	105	3	323	30	461	11	6	0	76	93	554
2016-2017 ^g	112	3	350	26	491	10	5	7	46	68	559
2017-2018 ^h	98	3	309	24	434	11	0	0	50	61	495
2018-2019 ⁱ	100	2	354	26	482	16	0	4	48	68	550
2019-2020 ^j	73	12	292	37	414	25	0	23	18	66	480
2020-2021 ^k	83	11	309	45	448	14	0	11	40	65	513
2021-2022 ^l	80	6	260	32	378	26	0	9	31	66	444
2022-2023 ^m	83	8	348	24	463	30	0	10	52	92	555
2023-2024 ⁿ	89	8	342	36	475	22	0	5	17	44	519

NOTE: Degrees awarded July 1 through June 30.

^aFive students each received two degrees (BA and BS) for 2010-2011.

^bThree students each received two degrees (BA and BS) for 2011-2012.

^cThree students each received two degrees (two received BA and BS; one received BA and BSH) for 2012-2013.

^dOne student received two degrees (BA and BSH) for 2013-2014.

^eFour students received two degrees (three received BA and BS; one received BS and BSN) for 2014-2015.

^fTwo students each received two degrees, BA and BS for 2015-2016.

^gThree students each received two degrees, BA and BS for 2016-2017.

^hTwo students each received two degrees, BA and BS for 2017-2018.

ⁱFive students each received two degrees, (two received BA and BS; two received BA and BSH; one received BS and BSN) for 2018-2019.

^jTwo students each received two degrees (one received BA and BSH; one received BS and BMUSH) 2019-2020.

Data Correction: Two additional students were added to B.S. and Total degrees for 2019-2020, on 11/4/2020.

^kThree students each received two degrees (one received BA and BSH; two received BA and BS) for 2020-2021.

^lTwo students each received two degrees (both received BA and BS) for 2021-2022.

^mSix students each received two degrees (all received BA and BS) for 2022-2023.

ⁿThree students each received two degrees (one received BA and BSH; two received BA and BS) for 2023-2024.

Source of data: Registrar and Institutional Research Annual Report

Total Degrees Awarded
2022-2023 and 2023-2024

Degree	August 2022	December 2022	May 2023 ^a	Total	August 2023	December 2023	May 2024 ^b	Total
B.A.	6	14	51	71	1	5	70	76
B.A. Honors	0	1	11	12	0	1	12	13
B.Mus.	0	0	7	7	1	0	7	8
B.Mus. Honors	0	1	0	1	0	0	0	0
B.S.	18	35	267	320	22	27	271	320
B.S. Honors	1	3	24	28	1	3	18	22
B.S.N.	0	0	24	24	0	0	36	36
B.S.N Honors	0	0	0	0	0	0	0	0
M.B.A.	7	0	23	30	3	0	19	22
M.Ed.	5	5	0	10	3	0	2	5
Ed.S.	17	17	18	52	3	13	1	17
Total	54	76	425	555	34	49	436	519

^aSix undergraduate students completed two degrees (all with BA and BS).

^b Three undergraduate students completed two degrees (one with BA and BSH; two with BA and BS).

Source of data: Registrar and Institutional Research Annual Report

Undergraduate Degrees Awarded 2023-2024 by Degree and Major

Degree	August		December		May	
	Primary	Secondary	Primary	Secondary	Primary	Secondary
BA Art: Art Education					1	
Art: Fine Art/Studio					3	
Communication: Communication and Media Studies					1	
Communication: Digital Storytelling					6	
Communication: Filmmaking and Cinematic Arts					3	1
Communication: Public Relations			1		9	
Communication: Sports Communication					3	
Communication: Visual Communication					1	
Creative Writing			1		5	
Economics			1			
English					11	1
Environmental Studies: Environmental Studies					1	
History					7	
Individually Designed: Entrepreneurial Marketing & Communication					1	
International Affairs					2	
Music					2	
Political Science			1			
Psychology					1	1
Religion and Philosophy: Biblical and Christian Studies					4	
Religion and Philosophy: Ethics and Value Theory						1
Secondary Education						15
Spanish	1		1		6	4
Theatre					3	
Subtotal	1	0	5	0	70	23
BAH Communication: Communication and Media Studies					1	
Communication: Public Relations			1		3	
Creative Writing					1	
Economics					1	
English					2	1
History					1	
History Plus: History Plus Global Issue					1	
Psychology					1	
Religion and Philosophy: Biblical and Christian Studies					1	1
Religion and Philosophy: Philosophy						2
Theatre						1
Subtotal	0	0	1	0	12	5
B.Mus. Music Education					5	
Music Performance					2	
Music with Elective Studies in Business	1					
Subtotal	1	0	0	0	7	0

Undergraduate Degrees Awarded by Degree and Major, 2023-2024 (Continued)

Degree		August		December		May	
		Primary	Secondary	Primary	Secondary	Primary	Secondary
BS	Accounting	1				6	7
	Animal Science: Pre-Vet/Pre-Professional Science	2		3		14	
	Animal Science: Production/Management	1		1		8	
	Applied Physics		1			6	1
	Biochemistry	1				20	
	Biology: Cellular and Biomedical			2		17	1
	Biology: Concentration I					3	
	Biology: Integrative Biology				1	5	1
	Biology: Wildlife, Ecology and Conservation	1				6	
	Chemistry		1			9	
	Communication: Communication and Media Studies				1		
	Communication: Filmmaking and Cinematic Arts						1
	Computer Science					1	3
	Creative Technologies	3				19	
	Data Analytics					1	
	Economics	1				3	
	Elementary Education	2				11	
	Environmental Science (no concentration)			3		6	1
	Environmental Science: Environmental Policy	1					
	Environmental Science and Studies: Environmental Science					1	
	Environmental Studies: Environmental Policy					4	
	Exercise Science (no concentration)					5	
	Exercise Science: Allied Health Pre-Professional			2		19	
	Exercise Science: Clinical/Research					1	
	Exercise Science: Strength and Conditioning					2	
	Finance	1		2		16	2
	History						1
	International Affairs						1
	International Business		1				
	Management	3		4	1	19	4
	Marketing	1				8	1
	Mathematics: Mathematics	2				6	2
	Mathematics: Mathematics Education			1		3	
	Middle-Grades Education					4	
	Music						1
	Physics: Professional Track					1	
	Political Science	2		1		5	
	Psychology			5		30	
	Secondary Education				1		5
	Sociology and Anthropology: Anthropology					1	
	Sociology and Anthropology: Sociology					4	
	Sociology and Anthropology: Sociology and Anthropology					3	
	Spanish						1
	Sport Leadership and Strategy					1	1
	Sports Administration			3		3	
<i>Subtotal</i>		<i>22</i>	<i>3</i>	<i>27</i>	<i>4</i>	<i>271</i>	<i>34</i>

Undergraduate Degrees Awarded by Degree and Major, 2023-2024 (Continued)

Degree	August		December		May	
	Primary	Secondary	Primary	Secondary	Primary	Secondary
BSH Animal Science: Pre-Vet/Pre-Professional Science					2	
Biochemistry					1	
Biology: Cellular and Biomedical			1		3	
Biology: Integrative Biology	1					1
Creative Technologies					1	
Data Analytics					1	
Economics			1		2	
Environmental Science (no concentration)			1		1	
Management					1	1
Political Science					1	
Psychology					3	
Religion and Philosophy: Biblical and Christian Studies		1			1	
Spanish						1
Sports Administration					1	1
Subtotal	1	1	3	0	18	4
BSN Nursing					36	
Subtotal	0	0	0	0	36	0
Total Degrees/Majors¹	25	4	36	4	414	66
Total Students²	25		35		412	

¹Includes double degrees (majors reported with first major for each degree); second and third majors (reported with secondary majors).

²Excludes double degrees; second majors.

Some majors may be distributed through several degrees, especially those majors that offer both B.A. and B.S. degrees (such as Psychology). However, even those that are offered for only one degree may be divided between that degree and the degree with honors listing in this table.

Three students in 2023-2024 earned two degrees each (one in December 2023, with BA and BSH; two in May 2024, both with BA and BS). Some majors have two numbers reported. The first is the total number of students who indicated the discipline as a major. Since several pursued multiple majors, and six *earned two degrees*, the total number of majors is greater than the number of students receiving degrees. The "Secondary" column shows the number of students for whom the major listed was their second major.

Graduate Degrees Awarded by Degree and Major
2023-2024

Degree/Major	August 2023	December 2023	May 2024
MASTER OF BUSINESS ADMINISTRATION			
Business Administration	3	0	19
<i>SUBTOTAL</i>	3	0	19
MASTER OF EDUCATION			
Curriculum and Instruction	3	0	1
Educational Leadership	0	0	1
<i>SUBTOTAL</i>	3	0	2
EDUCATION SPECIALIST			
Curriculum and Instruction	3	13	1
Educational Leadership	0	0	0
<i>SUBTOTAL</i>	3	13	1
TOTAL	9	13	22

Source of data: Registrar and Institutional Research Annual Report

Undergraduate Students Graduating With Honors
2017-2018 Through 2023-2024

Year/Session	Number Graduating	Number With Honors	Percent With Honors
2017-2018^a			
Summer	14	1	7.1
Fall	52	18	34.6
Spring	366	143	39.1
Total	432	162	37.5
2018-2019^b			
Summer	19	1	5.3
Fall	48	16	33.3
Spring	410	169	41.2
Total	477	186	39.0
2019-2020^c			
Summer	13	1	7.7
Fall*	47	14	29.8
Spring	352	158	44.9
Total*	412	173	42.0
2020-2021^d			
Summer	23	1	4.3
Fall*	43	24	55.8
Spring	379	192	50.7
Total*	445	217	48.8
2021-2022^e			
Summer	16	1	6.3
Fall	34	15	44.1
Spring	326	171	52.5
Total	376	187	49.7
2022-2023^f			
Summer	25	9	36.0
Fall	53	22	41.5
Spring	379	209	55.1
Total	457	240	52.5
2023-2024^g			
Summer	25	7	28.0
Fall	35	17	48.6
Spring	412	217	52.7
Total	472	241	51.1

^aData corrected November 4, 2020

^a2017-2018: Summer 2017, 14 degrees were awarded to 14 students; Fall 2017, 53 degrees were awarded to 52 students (1 student with 2 degrees); Spring 2018, 367 degrees were awarded to 366 students (1 student with 2 degrees); and overall total for 2017-2018 of 434 degrees awarded to 432 students.

^b2018-2019: Summer 2018, 19 degrees were awarded to 19 students; Fall 2018, 48 degrees were awarded to 48 students; Spring 2019, 415 degrees were awarded to 410 students (5 student with 2 degrees); and overall total for 2018-2019 of 482 degrees awarded to 477 students.

^c2019-2020: Summer 2019, 13 degrees were awarded to 13 students; Fall 2019, 45 degrees were awarded to 45 students; Spring 2020, 354 degrees were awarded to 352 students (2 student with 2 degrees); and overall total for 2019-2020 of 412 degrees awarded to 410 students.

^d2020-2021: Summer 2020, 23 degrees were awarded to 23 students; Fall 2020 44 degrees were awarded to 43 students (1 student with 2 degrees); Spring 2021, 381 degrees were awarded to 379 students (2 students with 2 degrees); and overall total 448 degrees awarded to 445 students.

^e2021-2022: Summer 2021, 16 degrees were awarded to 16 students; Fall 2021, 34 degrees were awarded to 34 students; Spring 2022, 328 degrees were awarded to 326 students (2 students with 2 degrees); and overall total 378 degrees awarded to 376 students.

^f2022-2023: Summer 2022, 25 degrees were awarded to 25 students; Fall 2022, 54 degrees were awarded to 53 students; Spring 2023, 384 degrees were awarded to 379 students (6 students with 2 degrees); and overall total 463 degrees awarded to 457 students.

^g2023-2024: Summer 2023, 25 degrees were awarded to 25 students; Fall 2023, 36 degrees were awarded to 35 students (1 student with two degrees); Spring 2024, 414 degrees were awarded to 412 students (2 students with 2 degrees); and overall total 475 degrees awarded to 472 students.

Alumni Receiving Master's Degree or Higher
As of October 29, 2024

Year Graduated	Percent Five-Years ¹
2008-09	26.2%
2009-10	29.3%
2010-11	31.3%
2011-12	30.4%
2012-13	30.3%
2013-14	30.2%
2014-15	27.5%
2015-16	25.5%
2016-17	30.9%
2017-18	27.3%
2018-19	30.9%

¹ Percent of Berry bachelor degree recipients receiving Master's Degree or Higher within five years of graduation (by June 30th of fifth year), from Berry College or another institution.

Source of data:

National Student Clearinghouse data collected October 29, 2024.

Section IV

Faculty Profiles

Institutions Most Frequently Represented
by Berry Faculty's Doctorates

Fall 2023

College/University	Number Represented
Florida State University	6
University of Georgia	6
University of Tennessee	5
Indiana University	5
Emory University	4
University of North Carolina at Chapel Hill	4
Auburn University	3
Georgia Institute of Technology	3
Georgia State University	3
Rutgers University	3
University of Alabama	3
University of Texas at Austin	3
University of Virginia	3
Kennesaw State University	2
Louisiana State University	2
Ohio University	2
Tulane University	2
University of California at Irvine	2
University of California at Los Angeles	2
University of Illinois at Urbana-Champaign	2
University of Kentucky	2
University of Louisville	2
University of Nebraska	2
University of North Texas	2
University of Utah	2
University of Wisconsin	2
Virginia Polytechnic Institute State University	2
West Virginia University	2

College/University Represented (Continued)

Additionally, one faculty member holds a terminal degree from each of the following institutions. Of the institutions represented, Florida State University, the University of Georgia, and University of Tennessee granted the largest number of the doctorates, each having 6 or 4.0 percent.

Argosy University	University of Cincinnati
Baylor University	University of Cincinnati-Conservatory of Music
Bowling Green State University	University of Connecticut
California Institute of Technology	University of Dayton
Case Western Reserve University	University of Denver
Claremont Graduate University	University of Durham
Clemson University	University of Florida
Dartmouth University	University of Idaho
Florida International University	University of Iowa
Johns Hopkins University	University of Kansas
Kent State University	University of Las Palmas de Gran Canaria
Massachusetts Institute of Technology	University of Massachusetts
McGill University	University of Memphis
Michigan State University	University of Miami
New Mexico State University	University of Michigan
New York Medical College	University of Missouri
North Carolina State University	University of Montana
Northwestern University	University of New Orleans
Nova University	University of Notre Dame
Ohio State University	University of Oklahoma
Oregon State University	University of Pennsylvania
Pennsylvania State University	University of Pittsburgh
Purdue University	University of South Carolina
Rocky Mountain University of Health Profession	University of Southern Mississippi
Sam Houston State University	University of Texas at Arlington
South Dakota State University	University of Texas at San Antonio
State University of New York	University of Vermont
Still University	University of Washington
Texas A&M University	Virginia Commonwealth University
Texas State University	Washington State University at Pullman
The University of Chicago Divinity School	Washington State University at St. Louis
University of Alabama at Birmingham	Wayne State University
University of Alabama at Huntsville	Western Michigan University
University of California at Davis	Yale University
University of California at Santa Barbara	

Berry College
Faculty*
Fall 2023

School	No. of Full-Time Faculty	Number of Part-Time Faculty						Total Faculty	Total FTE
		Adjuncts	Part-Time Instructional Faculty ¹	Staff ²	Administrators ³	Total Part-Time	Part-Time FTE ⁴		
Campbell School of Business	21	7	0	1	1	9	2.3	30	23.3
Charter School of Education and Human Sciences	32	30	0	7	2	39	8.8	71	40.8
Evans School of Humanities, Arts, and Social Sciences	69	14	0	5	1	20	6.6	89	75.6
School of Mathematical and Natural Sciences	49	1	0	1	1	3	0.9	52	49.9
Administrator (Provost)	0	0	0	0	1	1	0.3	1	0.3
Total	171	52	0	14	6	72	18.8	243	189.8

*Excludes BCC courses and NCR reassigned time.

¹Includes part-time instructional faculty in phased retirement.

²Includes full-time staff (including coaches) with part-time teaching responsibilities.

³Administrators with faculty rank (with or without teaching responsibilities)—Provost, Dean of Academic Services, and four school deans.

⁴Part-Time FTE calculation: Part-time contact teaching load hours divided by twelve equal part-time FTE.

NOTE: Full-time (includes clinical and visiting faculty) and part-time faculty counts are based on contract status

Source of data: Faculty contracts data base, Human Resource Office; Faculty Teaching Load Reports, Institutional Research

Full-Time Faculty
Rank and Degree
Fall 2023

Rank	Number With				Total	Percent of Those in Rank With Doctorate
	Doctorate	Terminal Master's	Master's	Bachelor's		
Professor	38	0	0	0	38	100.0
Clinical Professor	0	0	0	0	0	0.0
Associate Professor	47	3	0	0	50	94.0
Clinical Associate Professor	4	0	0	0	4	100.0
Assistant Professor	43	3	0	0	46	93.5
Clinical Assistant Professor	7	0	2	0	9	77.8
Subtotal	139	6	2	0	147	94.6
Instructor	1	1	1	1	4	25.0
Clinical Instructor	0	0	2	1	3	0.0
Lecturer	5	1	11	0	17	29.4
Total	145	8	16	2	171	84.8

NOTE: Full-time and part-time faculty counts are based on contract status (*includes visiting, visiting/clinical, and clinical faculty*).

Source of data: Faculty contracts data base, Human Resource Office; Faculty Teaching Load Reports, Institutional Research

Full-Time Faculty
Gender Distribution Among Ranks
Fall 2023

Rank	Males		Females		Total	Percent Female of Total FT Faculty 2023 (N=171)
	No.	Percent of No. in Rank	No.	Percent of No. in Rank	M & F	
Professor	27	71.1	11	28.9	38	6.4
Clinical Professor	0	0.0	0	0.0	0	0.0
Associate Professor	27	54.0	23	46.0	50	13.5
Clinical Associate Professor	3	75.0	1	25.0	4	0.6
Assistant Professor	23	50.0	23	50.0	46	13.5
Clinical Assistant Professor	4	44.4	5	55.6	9	2.9
Instructor	2	50.0	2	50.0	4	1.2
Clinical Instructor	0	0.0	3	100.0	3	1.8
Lecturer	7	41.2	10	58.8	17	5.8
Total	93	54.4	78	45.6	171	45.6

NOTE: Full-time and part-time faculty counts are based on contract status (*includes visiting faculty*).

Source of data: Faculty contracts data base, Human Resource Office; Faculty Teaching Load Reports, Institutional Research

Berry College Faculty
 Number and Percent Tenured in Top Three Ranks
 Fall 2023

Rank	Number in Rank*	Number With Tenure	% of No. in Rank With Tenure
Professor	38	38	100.0
Clinical Professor	0	0	0.0
Associate Professor	49	47	95.9
Clinical Associate Professor	4	0	0.0
Assistant Professor	46	0	0.0
Clinical Assistant Professor	9	0	0.0
Total / % Top 3 Ranks	146	85	58.2
Administrators (Provost and Deans)	6	6	100.0
Total	152	91	59.9

*Total includes all full-time faculty, including those with zero teaching loads and those who are not on tenure track (including visiting faculty). Six administrators who are tenured are also included (Provost, Dean of Academic Services, and four school deans with faculty rank).

Source of data: Faculty contracts data base, Human Resource Office

Full-Time-Equivalent Faculty and Faculty-Student Ratio
2018-2019 Through 2023-2024

Year and Session	FTE Faculty	Faculty-Student Ratio	Year and Session	FTE Faculty	Faculty-Student Ratio
2018-2019			2021-2022		
Fall	181.0	1:10.9	Fall	186.5	01:12.2
Spring	178.2	1:10.7	Spring	187.8	01:11.4
2019-2020			2022-2023		
Fall	178.9	01:11.1	<i>Fall*</i>	<i>185.5</i>	<i>01:12.6</i>
Spring	179.4	01:10.7	Spring	179.8	01:12.1
2020-2021			2023-2024		
Fall	179.1	01:11.7	Fall	189.8	01:12.3
Spring	175.4	01:11.4	Spring	188.3	01:11.9

Source of data: Institutional Research; taken from teaching load reports

**Data updated October 6, 2023:*

Age Distribution of Full-Time Faculty*
October 13, 2023

<i>Age Bracket</i>	<i>Percentage in Age Bracket (N=171)</i>
20-24	0.0
25-29	5.3
30-34	11.7
35-39	12.9
40-44	12.9
45-49	12.3
50-54	10.5
55-59	14.6
60-64	11.7
65	0.6
66	0.0
67	0.6
68	0.6
69	0.6
70+	3.5
Total	100.0

Average = 48

*Includes full-time faculty by contract.

Source of data: Faculty contracts database, Human Resource Office

Section V

Financial

Alumni Annual Giving
2020-2021 Through 2023-2024

Item	2020-2021	2021-2022	2022-2023	2023-2024
Alumni Giving	\$1,792,980	\$1,893,795	\$1,964,819	\$2,949,018
Participation College Graduate	23.8%	19.1%	16.92%	10.8%
Number of College Graduate Alumni Donors	3,293	2,702	2,463	1,527

Source of data: Advancement Office

Berry College Financial-Aid Programs
2019-2020 through 2023-2024

Item	2019-2020	2020-2021	2021-2022	2022-2023	2023-2024
BERRY					
Academic Merit Scholarships	\$ 28,458,325	\$ 31,720,890	\$ 35,706,527	\$ 37,155,818	\$ 37,846,691
Alumni & Friends Grants	\$ 5,549,301	6,372,218	7,394,575	8,476,426	8,772,527
Other Berry Scholarships (Talent, Major/Minor, International, etc.)	\$ 605,587	542,489	476,396	556,317	485,712
SUBTOTAL	\$ 34,613,213	\$ 38,635,597	\$ 43,577,498	\$ 46,188,561	\$ 47,104,930
MATCHING GRANTS					
Berry Yellow Ribbon Match	\$ 78,295	83,424	79,189	99,589	86,688
Berry REACH (GSFC)	\$ -	\$ 2,500	\$ 2,500	\$ 12,500	\$ 17,500
SUBTOTAL	\$ 78,295	\$ 85,924	\$ 81,689	\$ 112,089	\$ 104,188
SPECIAL PROGRAMS					
Berry Bonner Scholars	\$ 1,834,525	\$ 2,069,007	\$ 2,115,257	\$ 2,398,241	\$ 2,548,929
Bonner Scholars Foundation - Service	\$ 189,250	\$ 199,211	\$ 198,000	\$ 207,000	\$ 225,000
Bonner Scholars Foundation	\$ 110,000	\$ 187,505	\$ 178,750	\$ 179,129	\$ 187,500
Berry Gate of Opportunity	\$ 1,830,120	\$ 1,861,547	\$ 1,928,826	\$ 1,845,761	\$ 2,057,586
Donor Gate of Opportunity	\$ 1,748,756	\$ 1,798,271	\$ 1,866,550	\$ 1,864,186	\$ 2,057,612
Berry Other Gate of Opportunity	\$ 317,099	\$ 123,854	\$ 236,962	\$ 416,827	\$ 487,689
Berry Goizueta Scholarship	\$ 29,150	\$ 47,000	\$ 19,000	\$ 11,000	\$ -
Goizueta Scholarship	\$ 136,350	\$ 149,500	\$ 174,000	\$ 192,784	\$ 199,500
Lettie Pate Whitehead Foundation	\$ 587,000	\$ 640,000	\$ 640,000	\$ 695,000	\$ 750,000
Leadership & Service Fellows	\$ 220,000	260,500	273,000	263,769	226,000
Berry WinShape College Program	\$ 20,000	26,000	25,000	14,500	23,500
WinShape College Program	\$ 582,392	547,767	574,605	577,685	583,084
SUBTOTAL	\$ 7,604,642	\$ 7,910,162	\$ 8,229,950	\$ 8,665,882	\$ 9,346,400
STATE					
HOPE Scholarship	\$ 2,748,188	3,093,968	3,368,566	3,899,469	4,443,505
Other State Programs	\$ 60,250	74,000	93,608	146,876	149,506
Student Access Loan Program	\$ 644,763	445,229	528,486	541,801	391,308
Tuition Equalization Grant	\$ 1,161,332	1,131,495	1,235,386	1,382,377	1,542,489
Zell Miller Scholarship	\$ 1,986,261	2,271,252	2,629,810	2,782,572	2,660,969
SUBTOTAL	\$ 6,600,794	\$ 7,015,944	\$ 7,855,856	\$ 8,753,095	\$ 9,187,777

Item	2019-2020	2020-2021	2021-2022	2022-2023	2023-24
FEDERAL					
Pell Grant	\$ 2,055,878	\$ 2,262,879	\$ 2,742,916	\$ 2,870,694	\$ 3,465,416
Supplemental Ed. Opp. Grant (SEOG)	\$ 217,600	143,524	159,279	175,289	216,129
TEACH Grant	\$ 3,752	7,536	30,176	33,948	30,176
NOYCE Grant	\$ 60,690	50,880	104,011	116,620	119,762
Legion S-STEM				60,000	85,487
TRIO				47,000	35,000
Work Study	\$ 216,171	343,942	445,969	590,442	544,657
Subsidized Student Loans	\$ 2,647,878	2,259,781	2,234,291	2,126,239	2,303,621
Unsubsidized Student Loans	\$ 3,773,974	4,034,703	4,188,982	3,928,486	3,526,973
Parent Loan for UG Students (PLUS)	\$ 2,963,027	2,968,870	3,067,287	3,040,877	3,277,069
SUBTOTAL	\$ 11,938,970	\$ 12,072,115	\$ 12,972,911	\$ 12,989,595	\$ 13,604,290
OTHER					
JT Hall Loan	\$ 58,615	31,445	63,600	38,000	22,000
Outside Scholarships	\$ 504,544	558,537	682,327	655,998	704,694
Roughgarden Loan	\$ 4,000	8,000	13,711	4,000	-
SUBTOTAL	\$ 567,159	\$ 597,982	\$ 759,638	\$ 697,998	\$ 726,694
TOTAL	\$ 61,403,073	\$ 58,321,638	\$ 65,165,903	\$ 68,629,249	\$ 70,623,691

Source of data: Financial Aid Office